

North Notts
College

FUTURES FOR

Everyone

**COURSES AND
APPRENTICESHIPS**

2025/2026

THIS IS *Your Time*

PRINCIPALS WELCOME

DURING YOUR TIME WITH US WE WANT TO HELP YOU ACHIEVE YOUR ASPIRATIONS.



Jason Austin

Jason Austin
CEO and Principal of RNN Group*

*RNN Group comprises of Rotherham College, North Notts College and Dearne Valley College

Time is something we all have, but what it means to us and how we use it differs so much. It can mean time for ourselves, to grow, reflect, and develop skills. It can mean time for others, for socialising, making lifelong friendships, or caring for family. No matter what your goals are, it takes time to achieve them.

We challenge you to achieve everything you want to do and will support you on your journey of life-changing learning. With us, you can spend your time wisely, putting your passion to practice in our first-rate facilities, all whilst being taught by our industry-experienced tutors. You'll be able to learn in environments that simulate the real world, on courses that have been designed in close collaboration with our wide network of local and regional employers.

Of course, College isn't just about 'studying'. During your time with us, you will benefit from access to enrichment programs, clubs, social action projects, and memory-making overseas trips. You can also make your voice heard by taking part in our Student Union.

How you use your time is one of the most important things you'll ever decide. We are so excited that you are considering spending it with us to take your next step on your learning journey.

GET IN TOUCH
North Notts College
01909 504500
contact@nnc.ac.uk

DIRECTOR OF CAMPUS WELCOME

WELCOME TO NORTH NOTTS COLLEGE.



Mel Smith

Mel Smith
Director of Campus
North Notts College

The College sits in the heart of your community and is a place for you to learn, develop and become the absolute best that you can be. Whatever your interest, whatever your starting point and whatever your goals and dreams you have in life, our college will help you to realise your unlimited potential.

College is a place to express yourself and to study a subject that you are passionate about. Throughout your time with us we expect you to challenge yourself, to grab every opportunity that comes your way and most importantly, to enjoy your education and make a lifelong commitment to learning.

College is also a place to make friends, memories and to work alongside our amazing team, who will mentor, support and help you to meet your goals.

You will have access to our incredible facilities in which you will be able to develop the knowledge, skills and behaviours that you need to be successful.

This is your college, it is your community and this is the start of your learning journey with us. We are so pleased you are considering studying here and look forward to seeing what your future holds.



Contents

WELCOME

We are North Notts College	6-7
Your College Experience	8-9
Learner Experience	10-11
Sustainability	12-13
Wellbeing Support	14-15
Student Support	16-17
What Our Students Say	18-19

COURSES

Your Study Options	20-21
Course Levels Explained	22-23
Technical Courses	24-25
T Levels	25
Higher Technical Qualifications	26-27
What is an Apprenticeship?	28-29
Our Courses	30-101
Careers Index	102-103

GETTING TO COLLEGE

Travelling to College	104-105
Student Bus Service	106-107

OUR SITES

Our Facilities	108-109
Commercial Outlets	110-113
Rotherham College	114-115
Dearne Valley College	116-117
University Centre Rotherham	118-119
Bridge Skills Hub	120-121

APPLYING

How to Find Us	122-123
Open Events	124-125
How to Apply	126-127

WE ARE

North Notts College

HANDS-ON LEARNING IN THE HEART OF WORKSOP.

At North Notts College, what you learn is what you'll use. Every year, our technical courses and apprenticeships help to educate, develop and prepare thousands of local people to achieve their dreams.

YOUR CHOICE

Our courses and apprenticeships are designed together with local employers to make sure that whatever your dream career is, we'll make sure you're prepared. Choose from a wide range of subjects including:

- Business
- Computing
- Construction
- Digital Marketing
- Education and Childcare Services
- Engineering
- English and maths
- FLEX - Dedicated department for students with Special Educational Needs
- Hair and Beauty
- Health Science and Care
- Media Make-up
- Motor Vehicle
- Protective Services
- Sport and Physical Activity

YOUR FACILITIES

Across our two campuses in the heart of Worksop, we take learning beyond the classroom. Our main campus in Worksop is just a five minute walk from the train station and offers engaging learning environments such as our Hair and Beauty salon (open to members of the public), our purpose-built construction workshops, kitted out with all the tools you need to succeed and our state-of-the-art gym.

North Notts College provides students with the perfect space to develop. We provide courses in Media Make-up and Sport, where our students have access to cutting-edge equipment and spacious facilities.

Located in Worksop town centre is our Bridge Skills Hub campus, where we deliver Higher-Level qualifications alongside our sister university, University Centre Rotherham. To find out more about higher-level qualifications in the heart of Bassetlaw, please visit nnc.ac.uk/bridge-skills-hub



UNSURE ABOUT YOUR NEXT STEP?

Check out page 24 to read up on the different benefits with Technical courses, Apprenticeships and T Levels

For more information about North Notts College, please visit: nnc.ac.uk



YOUR College Experience

STUDYING AT COLLEGE CAN BE AN EXPERIENCE LIKE NO OTHER.

We provide plenty of opportunities to try new things, and most importantly have fun. At College you'll have more freedom, learn new skills and build friendships to last a lifetime.

BECOME A STUDENT AMBASSADOR

As a college student, you'll have a lot more free-time on your hands. Now's the perfect time to enhance your CV and lend a hand as a student ambassador.

As an ambassador, you get paid to help out at College Open Events, give tours and go out to local schools to speak to potential students. Becoming a student ambassador will not go unnoticed to future employers.

ENJOY HEARING FROM GUEST SPEAKERS

As well as being taught by top-class tutors, throughout the academic year you'll have the chance to hear from guest speakers from industry professionals who work for some of the top organisations in their field and help provide you with a unique insight into your future profession.

ENRICHMENT

Make the most of your free time and meet friends for life with our fun extracurricular activities, including cross college sports days, World Skills UK competitions, charity events, fun runs, book clubs and much more, such as:

- College sports days and inter college sports competitions
- World Skills UK Competitions
- Fitness classes
- Charity Events
- Fun runs
- Sports clubs including football and rugby
- Book Clubs supported by the Library
- Gym sessions
- Preparation for Life including personal budgeting, building positive relationships
- Football club
- LGBTQ+ club
- Environment and sustainability Group
- Gaming
- Warhammer
- Pilates/Yoga
- Social table tennis
- Performing arts
- Movie Club
- Debate sessions
- Community Champion club



Careers Service

INDUSTRY PLACEMENTS

We work closely with businesses across the region to not only develop our curriculum and facilities, but also to help you get your foot in the door. Through our industry placements you can start climbing the career ladder and gain invaluable experience - perfect for building your CV.

ERASMUS/TURING SCHEME

Have you ever dreamt of living abroad? Now's your chance! We work together with Erasmus+ and the Turing scheme to offer our Level 3 and degree students the once in a lifetime opportunity to travel and work abroad. Previous students have worked in places such as Italy, Malta, Germany, Portugal and Spain.

TRIPS AND EXCURSIONS

Off-campus learning is key to life at college. Whilst studying, you and your classmates will have the opportunity to go on exciting trips and excursions to businesses, attractions, universities and more. Former students have visited places such as St. George's Park, home to England's football team. They have also visited Wentworth Woodhouse, Manchester Airport and many, many more.



Learner Experience

GETTING STARTED IN SEPTEMBER

WELCOME WEEKS

During our welcome weeks, you can find out more about the activities and enrichment opportunities available. If you find that we have not got something for you and your interests, visit the reception and they will put you in touch with the person who can help you get your interest or club up and running.

CAREERS ADVICE AND SUPPORT

North Notts College has dedicated Careers lounges for you to seek advice, guidance and help throughout your time at college with your next step when you have finished your course or courses with us.

Expert staff can support you with plans, CV writing, cover letter writing, interview technique and general careers guidance.



Sustainability

WORKING TOWARDS A GREENER FUTURE

Sustainability is central to how we operate at North Notts College and the RNN Group, something that all staff and students contribute to.

We have set a target of 2050 to achieve net zero carbon emissions from our campuses. We are following the EAUC/ AoC Climate Action Roadmap for UK FE Colleges. We are a signatory to the Rotherham Together Partnership Climate and Nature Charter. As educators we have a duty to teach our students about sustainability, and our campuses should show our students what a sustainable organisation looks like.

THE SUSTAINABLE THINGS WE DO

ENERGY AND UTILITIES

The Group uses solar PV arrays and wind turbines to provide zero-carbon electricity and ground- and water- source heat pumps to provide low carbon heating. We are installing LED lighting systems combined with sensor technology to reduce electricity consumption. We use rainwater capture to supplement our mains water use and have other water-saving devices installed.

TRAVEL AND TRAVEL REDUCTION

Zeelo, our Transport Partner, is the first global bus platform to offer 100% carbon neutral services. Since September 2022 Zeelo has helped us to save 10.01 tonnes of CO2 on commuting to college campuses, replacing 2,853 car journeys.

We operate a number of charging points for electric vehicles for use by staff and students. We have a salary sacrifice scheme for bike users, bike boxes for secure cycle storage and shower facilities for bike users. We encourage staff to meet virtually where the business allows to reduce travelling between sites and there are hybrid working opportunities for most staff.

RECYCLING AND UPCYCLING

Our students run clothing library rails across the Group for pre-loved clothing to be picked up by another learner. Wood, metal, and plaster is recycled from our construction departments, with bricks and lime mortar being reused. Cardboard and paper, bottles and cans are recycled. Food waste is collected to provide biogas for energy generation off site.

We are a Google Reference College and through the use of Google Workspace for Education, we have significantly reduced our paper use by opting for electronically available education materials.

ENVIRONMENT AND SUSTAINABILITY COMMITTEE

Our leadership team discuss and provide a steer on sustainability matters at the highest levels of governance.

GO LOCAL

We make a principle of using local contractors and partners in our supply chain. We have strong links with the local communities in which our students and staff live.

PRINT AND PAPER

We now use non PVC banners and all our printed literature is FSC graded or recycled. We have reduced the number of physical prospectuses in favour of using QR codes linked to our digital prospectuses.



FLORA AND FAUNA

We plant wildflower areas at our campuses and participate in 'No Mow May'.

We have wildlife gardens, 10 acres of woodland, and Dearne Valley College is a "Hedgehog-friendly" campus. We also participate annually in the RSPB Big Schools Bird Watch.

RNN GROUP SUSTAINABILITY

Designed by Student Gracie Firth.

"My logo design consists of a leaf in 4 sections, each representing the four colleges and university buildings in RNN Group. I hope that my logo can help staff and students to recognise environmental issues and how we can play a part in reducing them."

Gracie Firth
Graphic Design Student

Wellbeing Support

WELLBEING IS AT THE HEART OF OUR COLLEGES AND VALUES

North Notts College recognises and places a great importance on mental health awareness and wellbeing for all members of our community – both students and staff.

We have a dedicated Student Support Team at North Notts College, who offer help and support to students who may be experiencing difficult and challenging times in their personal worlds.

PEOPLE SEEK OUR TEAM'S SUPPORT FOR MANY REASONS SUCH AS EXPERIENCING:

- Anxiety, stress and panic attacks
- Feeling overwhelmed in public settings
- Low mood
- Loss and bereavement
- Disturbing and unwanted thoughts and images

- Poor sleep
- Relationship difficulties
- Identity and Self-image issues
- Abuse/bullying
- Addictive behaviours (including substance abuse)
- Past trauma
- Troublesome repetitive behaviours
- Self-harming
- Frequent or troublesome issues with anger
- Concerns about living with physical illness/conditions
- Housing difficulties/problems at home
- Financial worries
- Our Student Support Team offers Mentoring, Counselling, and Safeguarding.

NATIONAL FREE COUNSELLING SERVICES AND TALKING SERVICES

Kooth

Kooth is a free, safe and anonymous online chat and emotional wellbeing service for young people aged 11 to 25. This is a free Counselling Service.

www.kooth.com

Qwell

Free, safe and anonymous mental wellbeing support for adults across the UK. This service is available from 18+

www.qwell.io

Samaritans

To speak to someone call: 116 123 (free from any phone)

www.samaritans.org/branches/rotherham

MENTORING

Mentoring tends to be the first point of contact normally when accessing our team.

Mentoring offers:

- A safe space to offload, puzzle over, and work positively toward managing life issues and emotionally upsetting times
- Links to Health Support, Social Support and Primary/Secondary Care
- Practical support with housing and financial applications, and travelling to college issues
- Appropriate advocacy – when a learner may need support linking with other teams/organisations within college and sometimes with external agencies
- A place to discuss the possibility of a referral to counselling, if counselling has been requested or advised
- Safety and Welfare: Mentors and Welfare Officers will always work to keep students and the community safe and are all fully trained safeguarding staff
- Wellbeing advice including sexual health, self-care themes and self-help information

COUNSELLING

Counselling offers:

- Professional Counselling – all counsellors have professional membership and follow an ethical code of practice
- A safe, private and confidential space to explore often deeper, complex or more troublesome issues in a more methodical and structured way
- Various choices for the student/client to make in how their counselling process progresses and which methods/models work best for each individual (Tailored approach)
- The chance of developing a useful, positive and supportive relationship whilst working through concerns

SAFEGUARDING

You can contact the College Safeguarding Team (during college open hours) by:

- Contacting the team on safeguarding@rnngroup.ac.uk
- Ask for Safeguarding at the College reception desk
- Or call reception on **01909 504500** and ask for Safeguarding

Important! In a mental health crisis, at any time, day or night, you can:

- Contact the NHS Crisis Team on 0808 196 3779 – available to anyone in mental health crisis 24/7 anywhere across the South Yorkshire / Nottinghamshire area
- Call 111 (call 999 directly if emergency)
- Contact your GP
- Go directly to the nearest A&E (Emergency Department)

Student Support

SAFEGUARDING AND SUPPORT SERVICES

Across all of our campuses we offer a range of services and support to help you with all aspects of student life as well as helping you overcome any difficulties you may face.

OUR STUDENT SERVICES

Our Student Services, Safeguarding and Health and Wellbeing teams offer a series of services.

This includes:

- Career and progression guidance
- In-class support
- Mental health and wellbeing support
- Enrichment activities and events
- Support and guidance on personal and welfare issues

ADDITIONAL LEARNING SUPPORT

If you would like additional learning support, we have a dedicated team who can agree your tailored support plan to help you make the most of your college experience and reach your full potential.

This includes:

- One-to-one support
- Access to assistive technologies
- Transition support
- Support with exams
- Specialist support team for SEND students

FREDIE

FREDIE stands for Fairness, Respect, Equality, Diversity, Inclusion and Engagement, and for North Notts College it is the backbone of a truly inclusive culture.

Diversity is good for business and diverse workforces are collaborative, creative, and are more understanding of diverse market needs.

We want everyone whether staff, students or parents carers to feel they belong to a fair College that fosters inclusion through identifying common ground

and finding opportunities for connection by recognising a fundamental need for respect that all human beings can understand and appreciate.

For more information visit:
nationalcentrefordiversity.com/meet-fredie



FINANCIAL SUPPORT

We have a number of support schemes available to take the financial pressure off, so you can enjoy your college experience and focus on your studies.

STUDENTS AGED 16-18

Students aged 16-18 when starting a course are not subject to any course fees and parents or carers will be eligible to claim benefits to help you out during your time at College.

Our dedicated Finance Team are here to help you throughout your studies. You can receive help with:

- Bursaries and course-related costs
- Travel passes
- Childcare queries
- Application queries

16 -18 COLLEGE BURSARY

You may be eligible to receive a contribution towards costs including:

- Travel
- Equipment
- Uniform
- Meals

For more information, speak to a Learner Finance Officer in Student Services.

STUDENTS AGED 19+

Students aged 19 and over may need to pay fees towards their education. These fees are based on the level of funding provided by the Government. Many adult students are entitled to financial support, please contact Student Services to find out if you are eligible. You may be eligible to receive support including:

- Advanced Learner Loans
- Travel costs
- Childcare costs
- Awarding body and tuition fees
- Other associated study costs

CONTACT STUDENT SERVICES

For more information about student support, please visit the Information tab on www.nnc.ac.uk or contact us directly on **01909 504500** or info@nnc.ac.uk

What our Students Say



“I enjoy coming to College. I get to work practically in a social environment which will provide me with the qualifications I need as an Electrician.”

William Edwards

Level 3 Apprenticeship in Electrical Installation

Former student at Outwood Academy Valley

“I love coming into College to see my friends and develop my skills in video editing. I want to use the skills that I learn at College to work as an IT Technician or to work with video production.”

Hannah Agbontan

Level 2 Computing and Digital

Former student at Outwood Academy Portland



“I really enjoy the practical side of the course as it helps prepare me for my future career. My favourite part of coming into College is to work with real clients in the Salon.”

Taylor Jade-Irving

Level 3 Hairdressing

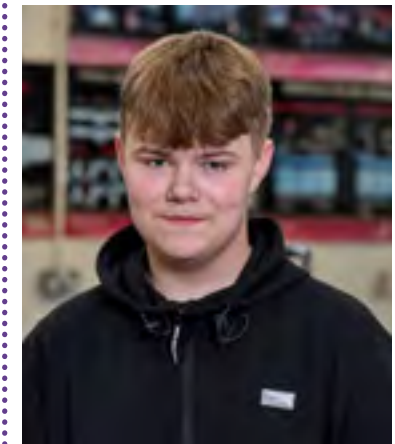
Former student at Elizabethan Academy

“The Fabrication and Welding course at North Notts College helps me develop my skills in trade techniques and teaches me to use specialised tools and equipment.”

Ethan Davis

Level 2 Engineering Operations

Former student at Retford Oaks Academy



Your Study Options

WHETHER YOU'RE LEAVING SCHOOL OR RETURNING TO EDUCATION, COLLEGE IS AN EXCITING TIME FILLED WITH NEW EXPERIENCES WHICH GIVES YOU THE FREEDOM TO CHOOSE YOUR NEXT STEP.

At North Notts College we have a number of options for your post-16 choice including technical courses, T Levels and apprenticeships. One thing all these options have in common is that you'll acquire hands-on experience in a subject that interests you, allowing you to develop the industry skills and knowledge needed to begin a successful career.

Throughout this course guide your options will be explained to help you make an informed decision. If a number of options spark an interest, you can apply to more than one course and don't have to decide until your GCSE results are finalised in August.

If you would like to discuss your options further get in touch with us on schoolevents@nncgroup.ac.uk

TECHNICAL COURSES

Technical courses are specialist courses focusing on one subject area. These courses come in a range of different course areas and provide you with all the practical skills and knowledge needed in your future career. On a technical course, you usually spend around three days-a-week studying your chosen course, with the rest of the time free to complete assignments, undertake work experience or pursue a hobby.

You may know technical courses as BTECs, NVQ and VRQs, with different courses available at a level to suit each student.

T LEVELS

T Levels are similar to technical courses, as they provide specialist training in a given area. The difference between the two is that T Levels include an in-depth industry placement that lasts at least 45 days.

APPRENTICESHIPS

An apprenticeship is a paid job where you will receive practical training and work alongside experienced staff. You will be in a real working environment, gaining employability skills and knowledge of an industry-sector.

As an apprentice, you'll work towards a nationally recognised qualification and typically spend four days a week in the workplace and one day a week at College (Some apprenticeships are five days in the workplace, where you will be given 20% of your normal working hours on training).

Apprenticeships are competitive like any job so it's worth having a college course as a back up option.



CASE STUDY

Shane Anderson

Level 3 Apprenticeship in Electrical Installation

“The facilities at College provide me with a great environment to gain the qualifications I need to pursue a career as an electrician.”

Course Levels

EXPLAINED

Our courses are offered in a variety of different levels, we refer to them as **Introduction Skills (Entry Level 1 – Entry Level 3), Level 1, Level 2 and Level 3 courses.**

The table below explains our typical entry requirements, the course duration and what each level means to help you find a starting point.

YOUR EXAM RESULTS OR PREDICTED GRADES	YOUR STARTING POINT AT COLLEGE	TYPICAL DURATION	WHAT THIS LEVEL MEANS
5 GCSEs at grade 4 or above	T Levels	Two years	T Levels are a Level 3 course which offer students a mixture of classroom learning and an industry placement of 315 hours (45 days). Equivalent to three full A-Levels.
OR			
A relevant Level 2 qualification	Level 3 course	A one or two-year course	Our Level 3 courses allow you to start to gain greater knowledge and learn advanced skills in your chosen industry.
	Level 3 Apprenticeship	Typically lasts 18 months to two years	A two-year Level 3 course is the equivalent of three full A-Levels.
4 GCSEs at grade 3 or above	Level 2 course	A one-year course	Our Level 2 courses allow you to specialise in your chosen industry.
OR			
A relevant Level 1 qualification	Level 2 Apprenticeship	Typically lasts one year	This provides a great foundation to build skills, knowledge and behaviours required for your chosen industry.
GCSEs at grade 2 or below	Level 1 courses	A one-year course	Our Level 1 courses give you the chance to explore a range of areas within your chosen industry, helping you to progress to Level 2.
No GCSEs or pre-GCSEs	Introduction Skills (Entry Level 1 – Entry Level 3 courses)	One-year per level	Our Entry Level courses introduce you to a subject area and are taught alongside other employability skills.

Please see our website for all course levels.

GRADING

Qualifications are now graded 9-1 rather than A*-G, with a grade 9 being the highest and grade 4 being an acceptable pass.

CURRENT GRADING STRUCTURE	FORMER GRADING STRUCTURE
9	
8	A*
7	A
6	
5	B
4	C
3	
2	D
1	E
	F
U	U

If you would like advice on what level is most suitable for you, please contact us on schoolevents@rnngroup.ac.uk

ENTRY REQUIREMENTS

If you haven't achieved GCSE maths and English at grades 4 or above, you will undertake these qualifications alongside your main programme. In addition to qualifications, you should also have genuine interest in the area you wish to study.

The table on page 22 shows our typical entry requirements. Some courses have additional entry requirements, which are listed throughout this guide. You can also find more information on our college websites.

PROGRESSION

After completing a Level 3 qualification you could progress into employment, further training or Higher Education.

We have Higher Education courses ranging from Level 4 to Level 7 available at our college campuses and our dedicated Higher Education campus, University Centre Rotherham (UCR). This includes Foundation Degrees, HNCs, HNDs, BA/BSc Honours and more. For more information see pages 122-123.

WHAT IS A Technical Course?

Technical courses are designed to help you to develop the skills and confidence to succeed in your chosen career. You will be taught by tutors with industry skills and experience and you'll learn in high-quality, purpose-built facilities that simulate a real working environment.

Technical courses at Level 3 are equivalent to A-Levels and are worth UCAS points, which means you can progress onto university after completion. They are mostly assessed by project work over the course of the year and can involve some exams and tests depending on the qualification.

Vocational courses have a number of different names such as BTECs, NVQs (National Vocational Qualifications) and VRQs (Vocationally Related Qualifications) that are available at different educational levels, so it is appropriate for students as they develop their skills and abilities.

Technical courses at Entry, Level 1 and Level 2 also help students develop their skills and move towards work or higher-level courses.

Our students have lots of contact with the 'real world' of employers and business through work experience, talks, visits or real-life projects. To celebrate International Women's Day, Media Make-up students worked with South Yorkshire Fire and Rescue Services on their Women of Fire campaign. The campaign celebrated the achievements of women in the Fire and Rescue Service through a series of photographs of female Fire Officers, styled by our Media Make-up students.

Students may also be involved in activities that develop skills of enterprise and entrepreneurship demonstrated by our student who participated in a book donation project. Over 90 books have been donated to the charity Grimm and Co who support under-resourced children with their confidence and skills around creativity and writing.

Students also take part in competitions such as the yearly inter-college championship where North Notts College compete against Grimsby Institute where over 30 subject areas showcased their specialist skills.

T-LEVELS

THE NEXT LEVEL QUALIFICATION

WHAT ARE T LEVELS?

We are delivering T Levels from September 2023 which offer students a mixture of classroom learning and an industry placement of 315 hours (45 days) where you will be fully integrated into the workplace.

T Levels are two-year technical programmes, designed with employers, to give young people the practical skills and knowledge that industries need.

The 'T' stands for technical and they are an alternative to A-levels. One T Level is equivalent to 3 A-levels and will be assessed using a mixture of practical tasks, projects and exams.

We are offering T Levels in Construction, Digital, Education and Childcare and Health and Science.

Please check our website for the latest information.



Higher Technical Qualifications

HIGHER TECHNICAL QUALIFICATIONS (HTQS) ARE SPECIALIST TECHNICAL COURSES DEVELOPED WITH EMPLOYERS AND DELIVERED BY INDUSTRY EXPERTS.

WHAT ARE HTQS?

HTQs have been developed in partnership with employers and are delivered by industry experts and focus on the skills, knowledge and behaviours that are in-demand by employers.

They can also act as a stepping stone to further study, such as an apprenticeship or undergraduate degree. Whether you're looking to take the next step in your chosen career or want to retrain into a new industry, an HTQ can help you gain the skills you need for a specialist technical job.

The first HTQs, focussing on digital sector subjects like Cyber Security or Software Development, began teaching in September 2022.

New qualifications in Health and Science and Construction, began teaching in September 2023, with more sectors coming soon.

WHAT WILL I ACHIEVE?

By completing an HTQ you will also achieve a Level 4 or 5 qualification in your subject area. These technical qualifications include Foundation Degrees, Higher National Certificates and Higher National Diplomas.

The courses are classroom-based with the opportunity to learn practical skills through workshops, role playing exercises, or using industry facilities.

From September 2023, University Centre Rotherham, Rotherham College and Dearne Valley College are offering HTQs in digital, construction and health and science.

Email careerscoaches@rnngroup.ac.uk for further information.



COURSE DURATION

On average an HTQ will take between 1 and 2 years to complete if studying full-time. Flexible options such as part-time, online and learning through short courses may also be available.

HTQs are provided by universities, Institutes of Technology, local colleges and independent providers.

ENTRY CRITERIA

Many providers will have their own entry criteria, such as minimum GCSE or A level (or equivalent) requirements. If you don't have GCSEs or A levels, you may be eligible for an HTQ through an Access to HE course.

COURSES AVAILABLE

Rotherham College:

- Construction Management (Site Supervisor) HTQ
- Diploma in Cybersecurity (HTQ)
- Diploma Data Analyst (HTQ)

North Notts College:

- Commercial Procurement and Supply (HTQ)
- National Certificate in Digital Technologies Software and Programming (HTQ)

Dearne Valley College:

- Health Science Associate Diploma (HTQ)
- FdSc Assistant Practitioner (HTQ)

WHAT IS AN Apprenticeship?

AN APPRENTICESHIP IS A JOB, WHERE YOU RECEIVE TRAINING, LEARN, AND DEVELOP SKILLS WITHIN AN INDUSTRY SECTOR.

APPRENTICESHIPS IN PRACTICE

As an apprentice, you are a paid employee, who receives training and education in combination with gaining work experience, where you have a contract of employment and employer rights, such as paid annual leave.

Apprentices work towards a national recognised qualification and typically spend four days a week in the workplace and one day a week completing off-the-job training, this is typically (but not always) at College.

APPRENTICESHIP LEVELS

Apprenticeships offer a wide range of different levels to meet the fluctuating demands of each level of business. We provide apprenticeship options ranging from Level 2 to Level 6, all taught by our team of industry-experienced staff.

Type	Level	Equal Educational Level
Intermediate	2	5 GCSEs at grades 9-4
Advanced	3	2 A-Levels
Higher	4, 5	Foundation Degree
Degree	6	Bachelor's Degree

93%

OF APPRENTICES REMAIN EMPLOYED ON COMPLETION

2.2M

PEOPLE HAVE STARTED AN APPRENTICESHIP SINCE 2015

80%

OF AN APPRENTICES TIME IS SPENT AT THE WORKPLACE AND 20% DOING OFF-THE-JOB LEARNING



APPRENTICESHIP SALARIES AND BENEFITS

As an apprentice, you are entitled to earn a salary of at least the National Minimum Wage for apprentices, which is currently £6.40 (as of April 2024 - Updated annually on the 1st of April).

A lot of employers choose to pay their apprentices a higher salary than the National Minimum Wage.

As an apprentice, you are also entitled to paid holiday, sick pay, support in the form of mentoring or coaching and benefit schemes such as childcare.

£6.40

APPRENTICESHIP NATIONAL MINIMUM WAGE

OUR APPRENTICESHIPS

Our apprenticeships last anywhere from 12 months to four years and are available to anyone over the age of 16, with no upper age limit.

We offer apprenticeships in the below areas:

- Business Administration
- Construction
- Early Years and Education
- Engineering
- Hairdressing
- Health and Social Care
- Hospitality
- Management
- Motor Vehicle



OUR Courses

Construction and Infrastructure

Bricklaying	32-35
Carpentry and Joinery	36-37
Electrical Installations	38-39
Plumbing	40-43

Creative and Service Industries

Business, Computing and Digital Design	44-49
Hair and Beauty and Non-Medical Aesthetics	50-55
Media Make-up	56-59

Engineering and Technology

Fabrication and Welding	60-65
Motor Vehicle Including Green Technologies	66-71

Essential and Supported Education

English and Maths	72-73
FLEX (Department for students with SEND or High Needs)	74-75

Healthcare and Social Services

Education and Childcare Services	76-83
Health Science and Social Care	84-89
Sport and Protective Services	90-101

We make every effort to ensure information within our College course guide is accurate and a true representation of the courses and apprenticeships we are offering in 2025/26. However, we do reserve the right to make changes if necessary.

Construction

OUR DEDICATED CONSTRUCTION CENTRE PROVIDES YOU WITH THE BUILDING BLOCKS FOR YOUR FUTURE.



At North Notts College you can build your career in construction and learn a hands-on skilled trade that will prepare you for this exciting and varied industry.

We offer training in all the main construction trades including courses and apprenticeships in bricklaying, carpentry and joinery, electrical installation and plumbing.

There are fantastic opportunities to showcase your skills at competitions and get involved in real-life projects, which will help you develop your CV and enhance your employability. You'll be supported by industry experienced tutors and have the opportunity to complete an industry placement, which will help to develop your employability skills and build your network of contacts.

BRICKLAYING

You will learn all the key skills needed to become a Bricklayer, such as constructing half brick and solid walling, cavity walls, arches, solid wall piers, decorative fireplaces and chimney stacks. Other skills include trowel skills, brick bonding and building complex masonry. Alongside practical skills you will also study welfare, site procedures and health and safety in construction. You'll also get to meet key employers in the trade and carry out work experience that will enhance your CV.

CARPENTRY AND JOINERY

You will learn how to use wood machinery and power tools, explore timber technology, timber floor and roofing techniques, modern truss roof construction, all aspects of kitchen fitting, building partition walls and fitting door linings and fitting doors.

PLUMBING

Our Plumbing courses will prepare you for work in the domestic and industrial sectors. You will learn a range of practical skill-based units, plus a variety of bending and jointing techniques, as well as learning how to fit central heating systems, underfloor heating, environmental technologies and gas systems. Our students also enjoy visits to local employers where they see real-life projects in action.

ELECTRICAL INSTALLATION

You will gain hands-on knowledge and skills of domestic electrical installations allowing you to work towards a career as an Electrician. You will need to achieve a Level 2 and Level 3 course as well as a competency-based qualification to be a fully qualified Electrician.



PATHWAYS

	PATHWAYS
Level 1	Bricklaying Construction Skills Plumbing
Level 2	Bricklaying Carpentry and Joinery Electrical Installation Plumbing Apprenticeship in Bricklaying Apprenticeship in Carpentry and Joinery Apprenticeship in Groundworking Apprenticeship in Plumbing and Domestic Heating T Level Foundation
Level 3	Carpentry and Joinery Apprenticeship in Bricklaying Apprenticeships in Carpentry and Joinery Apprenticeship in Gas Engineering Apprenticeship in Plumbing and Domestic Heating Apprenticeship in Electrotechnical Apprenticeship in Electrical Installation and Maintenance T Level in Design, Surveying and Planning for Construction T Level in On Site Construction (Brick and Joinery)
Your level will be discussed at interview	

Bricklaying

BRICKLAYING

On our Bricklaying courses you will learn all the key skills needed to become a Bricklayer, such as constructing:

Half brick and solid walling - Cavity walls and arches - Solid wall piers - Decorative fireplaces and chimney stacks. You will also learn crucial skills needed in the industry, including trowel skills, brick bonding, mixing and application of cement and mortar, and building of complex masonry.

Alongside practical skills you will also study welfare, site procedures and health and safety in construction. You'll also get to meet key employers in the trade and carry out work experience that will enhance your CV.



WHAT WILL I STUDY?

- Contribute to setting out and building of masonry structures.
- Carrying out block laying activities.
- Carrying out bricklaying activities.
- Building solid walling, isolated and attached piers
- Interpreting working drawings to set out masonry structures
- Construct cavity walling forming masonry structures

In addition, you will learn:

- Health, safety and welfare in construction
- Principles of building construction, information and communication

These additional units will ensure that you are able to:

- Read drawings and specifications
- Complete method statements and risk assessments
- Keep a clean work area
- Work safely at all times

PPE SAFETY

You will require PPE clothing including work trousers and safety shoes or boots.

WHY STUDY HERE?

- You will work with employers to gain hands-on experience in your industry and earn a salary while you learn
- You will learn from our industry-experienced tutors
- You will be taught in purpose-built, industry-standard facilities
- You'll participate in industry competitions such as Skill Build, World Skills and Inter-college challenges
- You will learn new skills, knowledge and behaviours and be able to transfer these skills
- You will have access to a highly qualified functional skills team
- You will have access to all College facilities and be issued with a student card

WHAT CAREERS OR STUDIES COULD I PROGRESS ON TO?

- Bricklayer
- Site Management
- Home builder
- Project development
- Self-employed business owner
- Foreman

ENGLISH AND MATHS

If you haven't achieved GCSE English and maths at grades 4 or above you will undertake these qualifications alongside your main programme.



Carpentry and Joinery

CARPENTRY AND JOINERY

On our carpentry and joinery courses, you will acquire all the needed knowledge and skills to become a skilled carpenter and joiner.

On this pathway, you will learn how to use wood machinery and power tools. Explore the benefits of timber technology. Develop your skills in timber flooring and modern roofing techniques. Learn all aspects of kitchen fitting, including building partition walls and fitting and lining doors.

Alongside practical skills, you will also study welfare, site procedures, and health and safety in construction. You'll also get to meet key employers in the trade and gain work experience that will enhance your CV.

WHAT WILL I STUDY?

- Learning basic joinery skills, tools and materials
- How to make and form basic and more advanced woodwork joints and frames
- Health and Safety
- Introduction to the construction industry
- Constructing advanced carpentry joints and standard carpentry components
- Principles of construction
- Circular saws
- Setting out and constructing standard joinery components
- Doors, stairs
- Constructing roofs, floors, stud walls, kitchen fitting, staircases
- First fixing and Second fixing
- Maintenance

- Constructing advanced carpentry joints and non-standard carpentry components
- Joinery products with curved components
- Setting out and constructing non-standard joinery components and components with curves
- Constructing hipped roofs, floors, stud walls, kitchen fitting, and staircases with turns
- Advanced First fixing and Second fixing
- Double doors and mouldings

WHY STUDY HERE?

- Learn from industry-experienced tutors with a wealth of experience in all construction trades
- Opportunity to work on a Heritage Project with Bassetlaw Council and the Thoresby Estate
- Great links to local employers including Polypipe, Sherwood Construction and Bassetlaw District Council
- Participate in industry competitions such as Skill Build, World Skills and inter-college competitions
- Attend site visits with local employers
- Access to industry-standard workshops, tools and equipment
- A thriving industry with 6,630 homes to be built in Bassetlaw by 2035

WHAT CAREERS OR STUDIES COULD I PROGRESS ON TO?

- Carpentry
- Project Manager
- Construction Estimator



PPE SAFETY

You will require PPE clothing including work trousers and safety shoes or boots.

Electrical

ELECTRICAL INSTALLATION

On our Electrical Installation courses, you will develop the skills needed to become an electrician. Tasks include installing, maintaining, and repairing electrical systems in industrial, commercial, and domestic environments.

You will gain the knowledge and skills required to work safely and confidently with a range of electrical equipment and systems. These include power, lighting, motors, and much more. Alongside practical skills you will study welfare, site procedures, and health and safety in construction. You will also get to meet key employers in the trade and gain work experience that will enhance your CV.

Our courses are built with sustainability in mind, covering renewable energy sources like solar panels and electric vehicle charging.

ENGLISH AND MATHS

If you haven't achieved GCSE English and maths at grades 4 or above you will undertake these qualifications alongside your main programme.

WHAT WILL I STUDY?

- Structure of the construction Industry
- Health and Safety
- Safe working practices
- Environmental and sustainability measures.
- Site preparation
- Electrical wiring and terminations
- Fabrication for electrical installations
- Electrical science and Technology
- Complex Lighting Circuits
- Radial and Ring Circuits
- Fitting Consumer Units
- Testing Electrical Circuits
- Terminating a Range of Electrical Cables
- Employability and Team Work



WHY STUDY HERE?

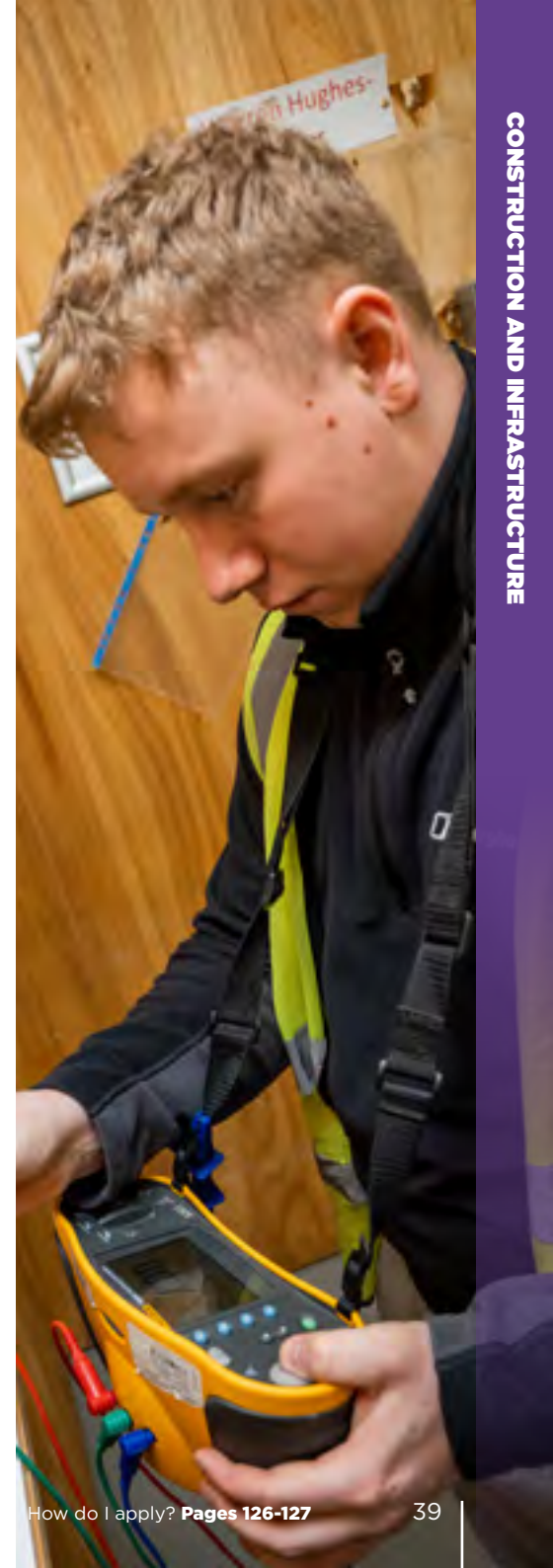
- Great transport links, modern workshops, experienced industrial professionals, and great employer links to local electrical contractors.
- Our very own Skills Academy, South Electrical, is on hand for professional discussions and expert workshops.
- You will learn in state-of-the-art facilities using industry-standard equipment
- You will attend industry competitions such as Skill Build, World Skills Competitions and the opportunity to take part in Inter-college Challenges.
- You will be encouraged to take part in enrichment activities to support learning
- Hear from a range of guest speakers from Electrical companies and wholesalers

WHAT CAREERS OR STUDIES COULD I PROGRESS ON TO?

- Electrician
- Approved Electrician
- Electrical Designer
- Electrical Engineer
- Maintenance Operative
- Inspect and commissioning job roles
- Electrical Quality Roles
- Management Positions

PPE SAFETY

You will require PPE clothing including work trousers and safety shoes or boots.



Plumbing

PLUMBING

Our plumbing courses will provide you with the skills needed for work in the domestic and industrial sectors.

You will develop a combination of practical skills and theory-based knowledge, where you will learn how to:

- Install, maintain, and repair central heating systems
- Fit underfloor heating
- Work with environmental technologies and gas
- Understand bending and jointing techniques
- Fit sinks and taps

Alongside practical skills, you will also study welfare, site procedures, and health and safety in construction. You'll also get to meet key employers in the trade and gain work experience that will enhance your CV.

WHAT WILL I STUDY?

- Hot Water
- Cold Water
- Sanitation
- Central Heating
- Domestic hot and cold water systems
- Central heating systems
- Sanitation systems
- Environmental technologies
- Gas safety

WHY STUDY HERE?

- You will learn in state-of-the-art facilities using industry-standard equipment
- We work in partnership with our local Employer Academy
- You will attend industry competitions such as Skill Build, World Skills Competitions and the opportunity to take part in Inter-college Challenges
- You will be encouraged to take part in enrichment activities to support learning
- Carry out meaningful voluntary work that will help your CV within the local area
- Hear from a range of guest speakers from Electrical companies and wholesalers
- Great transport links
- Experienced staff
- Employer links to local electrical contractors

WHAT CAREERS OR STUDIES COULD I PROGRESS ON TO?

- Plumber
- Maintenance Operative
- Heating and Ventilation Engineer
- Quality Roles
- Site Foreman
- Supervisor Roles

ENGLISH AND MATHS

If you haven't achieved GCSE English and maths at grades 4 or above you will undertake these qualifications alongside your main programme.

PPE SAFETY

You will require PPE clothing including work trousers and safety shoes or boots.



Future Careers...

IN CONSTRUCTION

The construction sector is ideal for those who like working outside, enjoy working practically and the ability to use their own initiative.

CONSTRUCTION MANAGER

Construction Managers organise building projects to make sure they're completed safely, within budget and on time.

Average salary - £46,000**

Day-to-day tasks:

Review plans with architects, surveyors and engineers, hire staff and make sure the site has the materials it needs, organise work schedules, monitor building progress and costs, check the quality of the work your team has done, report progress to clients, partners and local communities, maintain and promote health and safety.**

Working environments:

You could work on a construction site or at a client's business. Your working environment may be outdoors in all weathers, at height and you may spend nights away from home.**

BRICKLAYER

Bricklayers build houses, repair walls and chimneys and refurbish decorative stonework. They also work on restoration projects.

Average salary - £28,500**

Day-to-day tasks:

Measure work areas and set out the first rows of bricks or blocks, mix mortar by hand or with a mechanical mixer, use a trowel to lay bricks and mortar, shape and trim bricks using hammers, chisels and power tools, check that rows are straight using a spirit level, laser level or plumb line.**

Working environments:

You could work on a construction site. Your working environment may be physically demanding, outdoors in all weathers, at height and you'll travel often.**

.....
In-demand skills that commonly appear in job descriptions for roles within the construction sector include*:

- Communication
 - Management
 - Planning
 - Customer Service
 - Detail Orientated
-

*Information from EMSI 2024

**Information from nationalcareers.service.gov.uk



Business, Computing and Digital Design

LOG INTO A SUCCESSFUL CAREER IN THE COMPUTING, BUSINESS AND DIGITAL INDUSTRIES AND QUALIFY YOURSELF IN ONE OF THE MOST SOUGHT-AFTER CAREERS.

The computing, business and digital sectors are rapidly evolving and becoming increasingly in demand. Companies are needing higher level digital skills to remain competitive. This is not only in areas of computing such as software development but also in data analysis and social media analytics.

Our courses are designed to give learners a broad set of digital skills to enter the workforce or study at a higher level. Specialities include software engineering, security, data analysis, graphic design, game development, social media analytics and digital marketing.

These skills are becoming increasingly sought after and learners can start their journey at level 2 and progress to programmes on Level 3.

ENGLISH AND MATHS

If you haven't achieved GCSE English and maths at grades 4 or above you will undertake these qualifications alongside your main programme.

PATHWAYS	
Level 2	Cambridge Technicals in IT Creative Media T Level Foundation T Level Foundation in Business and Computing
Level 3	Computing Creative Media Digital Marketing T Level in Business T Level in Digital: Digital Production and Design
Your level will be discussed at interview	



Business, Computing and Digital Design

COMPUTING

You could study computing at Level 2 or Level 3, each giving you an overview of the subject. This also includes our new T level, which allows you to gain industry experience while studying. Level 2 is coursework driven, while at Level 3 you would also have to undertake exams.

WHAT WILL I STUDY?

- Website Development
- Computer Graphics
- Installing Hardware and Software
- Developing Computer Games
- Programming
- Working in IT
- Communication in IT
- Principles of Computer Science
- Fundamentals of Computer Systems
- IT security and Encryption
- Business Application of Social Media
- Games Development
- Website Development
- Software Design and Development
- Impact of computing

WE OFFER T LEVELS
IN THIS SUBJECT



CREATIVE DIGITAL MEDIA

This qualification is for students who want to start a career in a Creative and Digital industry. It is an ideal qualification for students intending to progress directly to employment in the Digital Media sector or to a related Apprenticeship within the sector.

WHAT WILL I STUDY?

- Video Editing
- Digital Photography
- Games Design
- 3D Modelling
- Traditional Media
- Working to a Client Brief
- Communicating Ideas

WHAT CAREERS OR STUDIES COULD I PROGRESS ON TO?

- IT Technician
- Network Technician
- Web Development
- Software Development
- Games Design
- Cyber Security
- Data Analysis
- Digital Media
- Social Media Analytics
- Social Media Digital Marketing



BUSINESS

This course will provide you with a general knowledge and understanding of the business sector and support progression onto a higher-level business apprenticeship programme, or employment within the business sector.

This course compliments the skills needed for Digital marketing or individuals wanting to know more about how companies operate.

WHAT WILL I STUDY?

- Enterprise in the Business World
- Finance for Business
- Promoting a Brand
- Principles of Marketing
- Project Management

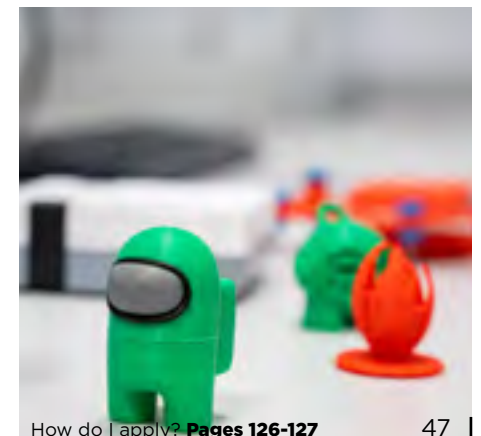
ENGLISH AND MATHS

If you haven't achieved GCSE English and maths at grades 4 or above you will undertake these qualifications alongside your main programme.

WHY STUDY HERE?

We have a good range of specialist professional equipment to make learning more engaging and realistic. We use industry-standard software for developing software and Adobe Creative Cloud for media work.

Staff are passionate about their subject and have a range of practical experience in their field.





Future Careers...

FUTURE CAREERS IN COMPUTING, BUSINESS AND DIGITAL DESIGN

The sectors are ideal for those who like to keep up to date with the latest technology, are creative thinkers and are passionate about working in an industry which is in high demand.

IT SERVICE ENGINEER

IT Service Engineers install and repair computer systems and equipment.

Average salary - £21,000**

Day-to-day tasks:

Cost and install new IT systems to meet security regulations, upgrade existing hardware, software and networks, document systems so others can provide ongoing support, set up new PCs for people and train staff, carry out on-site maintenance to prevent future problems, log and prioritise faults and queries, fix faulty equipment and testing systems and put back-up systems in place.**

Working environments:

You could work in an office, at a client's business, at a training centre, at a university or at a college.

WEB DESIGNER

Web Designers use their creative and technical skills to design new websites and redesign existing ones.

Average salary - £29,000**

Day-to-day tasks:

Take a lead in maintaining and developing a website, attend meetings with clients to plan and develop website style and appearance, use content management systems (CMS), analyse statistics about who is using the website, write reports for managers, clients and partners, report technical problems to IT support staff.**

Working environments:

You could work in an office, from home or at a client's business.

In-demand skills that commonly appear in job descriptions for roles within these sectors include*:

- Communication
- Management
- Customer Service
- Problem Solving
- Innovation

*Information from EMSI 2024

**Information from nationalcareers.service.gov.uk

Hair and Beauty

BRUSH UP YOUR SKILLS IN OUR COMMERCIAL AND TRAINING HAIR AND BEAUTY SALONS, AND STYLE A CAREER IN BEAUTY THERAPY, HAIRDRESSING OR MEDIA MAKE-UP.

With our range of courses in Beauty Therapy and Hairdressing at our Worksop campus and Hair and Media Make-up courses at our Retford campus, you can choose a specialist area that most interests you. Our courses combine practical, hands-on learning with theory-based sessions on anatomy and physiology and underlying conditions. You'll also have the chance to work on real-life clients in our commercial salon and showcase your skills in events and competitions.

You'll train in our industry-standard training salons that replicate what it's like to work in a real salon environment, and you'll learn from staff who still practice as Hairdressers, Beauty Therapists and Make-up Artists.

HAIRDRESSING

Learning from our experienced staff in industry-standard training and commercial salons, you will study everything from the science behind hair conditions to health and safety and practical hair cutting and colouring techniques.

On our Hairdressing and Barbering courses you will:

- Learn your trade on real clients, in our purpose-built College-salon
- Develop your knowledge, skill and understanding of salon treatments

- Have the opportunity to undertake work placement
- Develop your customer service skills

You can further your knowledge and skills by undertaking optional short courses covering skills such as hair extension application, further preparing you for a career in the industry.

BEAUTY THERAPY

The Beauty industry is booming! On our Beauty courses you will study all aspects of beauty therapy, where you'll develop the key skills and knowledge needed to be at the top of your profession.

On our Beauty courses you will:

- Learn your trade in our commercial salons using the latest industry-standard equipment and products
- Develop a core understanding of how to manage a salon and run a reception
- Carry out facials, manicures, pedicures hair removal and more
- Study everything from anatomy and physiology to health and safety

You will have the chance to undertake work placements with our network of local employers in the beauty industry including salons, spas and other settings, building your experience and allowing your CV to shine.



MEDIA MAKE-UP

On our Media Make-up courses you'll train within our dedicated media make-up salons and develop skills ranging from basic colour matching right up to airbrush make-up, cosmetic camouflage, prosthetics and special effects techniques. You will also develop hair styling skills to make you industry ready for a career as a make-up artist.

As well as taking part in regular masterclasses and industry guest speaker sessions, there will be opportunities to work on-location with models and performers and provide a wide range of creative makeup services in theatre, fashion and photographic settings.

Our tutors will support you with entering WorldSkills UK competitions and you will have the opportunity to attend other trade shows and make-up industry exhibitions.

Your level will be discussed at interview

PATHWAYS

Entry Level	Hair and Beauty
Level 1	Hair and Beauty Hair and Media Make-up
Level 2	Barbering Beauty Hair and Beauty Hairdressing Hair and Media Make-up Nails T Level Foundation
Level 3	Barbering Beauty Hairdressing Special Effects, Hair and Media Make-up T Level in Hair, Barbering, and Beauty Therapy
Level 4/5	Aesthetics Foundation Degree in Theatrical Hair and Media Make-up HNC/HND in Performing Arts: Make-up Route

Hair and Beauty

BEAUTY

Our courses in Beauty are an opportunity to learn the skills required to work in a salon environment.

You'll learn a variety of practical treatments and gain a theoretical understanding of anatomy and physiology, health and safety.

WHAT WILL I STUDY?

- Facial Skin Care and Massage
- Eye Treatments - Tinting and Shaping
- Manicure Treatments
- Pedicure Treatments
- Waxing
- Make-up
- Reception Duties
- Retail Sales and Treatments
- Anatomy and Physiology/Cosmetic Science
- Health and Safety

ENGLISH AND MATHS

If you haven't achieved GCSE English and maths at grades 4 or above you will undertake these qualifications alongside your main programme.

UNIFORMS

You will be required to purchase a uniform and kit as part of your programme further details can be obtained at interview.

WHY STUDY HERE?

- Learn from industry-experienced and well-qualified tutors who have spent many years in the beauty industry, and have specialist qualifications and knowledge to bring to their teaching
- Access the state-of-the-art salon facilities and equipment
- Take part in cross-campus events and charity fundraisers
- Hear from a range of guest speakers from the beauty industry
- Acquire new skills and enrichment specific to the beauty industry

WHAT CAREERS OR STUDIES COULD I PROGRESS ON TO?

- Beauty Therapist
- Media Make-up Artist
- Salon Manager
- Spa Therapist
- Massage Therapist
- Spa Manager
- Teacher or Assessor
- Self-employment



HAIR AND BEAUTY

Our courses in Hair and Beauty are designed to provide you with hairdressing and beauty therapy practical skills and knowledge, as well as an insight to the industry. You will gain skills of both the practical application of hair and beauty techniques and the knowledge of treatments and clients.

WHAT WILL I STUDY?

- Introduction to the hair and beauty sector
- Health and safety
- Working with others
- Shampoo and conditioning
- Colour hair using temporary colour
- Salon reception duties
- Plaiting and twisting hair
- Basic manicure
- Skincare
- Basic make-up
- Themed face painting
- Creating an image

WHY STUDY HERE?

- Learn from experienced industry experienced tutors and salon owners
- Study in specialist salons with industry-standard equipment
- Work on real-life clients in our commercial salons
- Hear from guest speakers from local businesses, Steiner cruise ships,
- Great British Barber Bash
- Competitions including Focus on You show and WorldSkills
- Work experience opportunities with local employers including Ye Olde Bell, Funky Divas and Steiner

WHAT CAREERS OR STUDIES COULD I PROGRESS ON TO?

- Barber or Hairdresser
- Beauty Therapist
- Media Make-up Artist
- Salon Manager

Hair and Beauty

HAIRDRESSING

Our courses in Hairdressing and Barbering will ensure you have the desired knowledge and skills to work effectively as a Barber or Hairdresser/Stylist. You will gain practical skills such as cutting, colouring and styling techniques.

WHAT WILL I STUDY?

- Client Consultation
- Shampooing and Conditioning
- Styling Hair
- Creating a Theme-based Image
- Basic Cutting Techniques
- Perming and Neutralising
- Basic Hair Colouring Techniques
- Salon Reception Duties
- Promoting Products and Services
- Health and Safety in the Salon
- Hairdressing Consultation
- Hair Cutting Services
- Hair Colouring Services
- Setting and Dressing Services
- Blow-drying and Finishing Services

ENGLISH AND MATHS

If you haven't achieved GCSE English and maths at grades 4 or above you will undertake these qualifications alongside your main programme.

HAIR PROFESSIONAL APPRENTICESHIP

This Apprenticeship programme gives you the opportunity to gain nationally recognised qualifications whilst working within the industry. You will attend College one day a week, whilst the rest of the course is undertaken on the job in your workplace. The Apprenticeship is made up of two components, which include a technical qualification and a knowledge based qualification.

WHAT WILL I STUDY?

- Consultation
- Shampoo and Condition and Treat the Hair and Scalp
- Cut Hair Using a Range of Techniques to Create a Variety of Looks
- Styling and Finishing Hair
- Colouring and Lightening Hair
- Perming Hair
- Relaxing Hair
- Hair Extension Services

UNIFORMS

You will be required to purchase a uniform and kit as part of your programme further details can be obtained at interview.



Hair and Beauty

MEDIA MAKE-UP

Our courses in Media Make-up are designed for students wanting to pursue a career in Media Make-up, providing hair and make-up services in the Media, Theatre, Fashion and Photographic industries. You'll develop the knowledge, understanding and skills to plan for and provide make-up applications, hair preparations services, fashion and editorial make-up with extended knowledge in face and body art.

Courses on offer start at Level 1 and learners can progress all the way up to a Level 5 program, provided entry criteria are met.

Tasks undertaken within the salon range from basic client care and make-up application all the way up to complex make-up looks involving postiche and prosthetics.

Progression into industry settings through work placements offer students the opportunity to build a portfolio and make professional contacts.

WHAT WILL I STUDY?

- Client care and Health and Safety
- Prosthetics and Special effects
- Photographic make-up
- Hair styling and postiche
- Body Art and Face Painting
- Remedial Camouflage
- Airbrush make-up and fantasy looks

WHAT CAREERS OR STUDIES COULD I PROGRESS ON TO?

- Freelance Make-up Artist
- Bridal Hair and Make-up Artist
- TV and Film
- Fashion or Editorial work
- Retail Artist
- Education
- HNC/HND in Performing Arts: Make-up Route

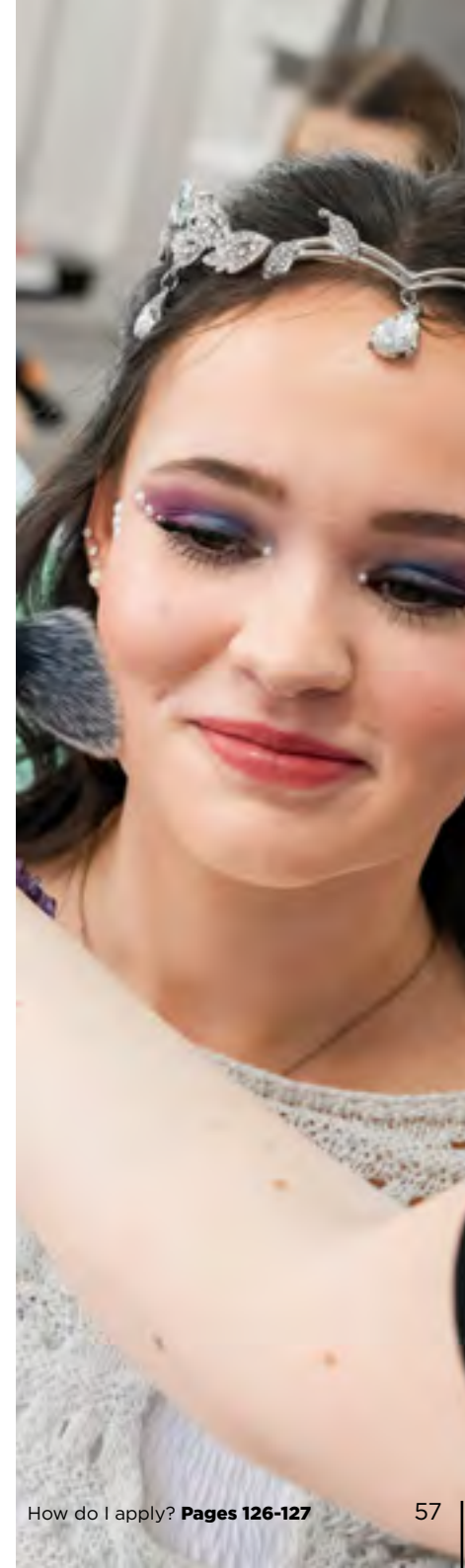


WHY STUDY HERE?

- Learn from industry-experienced and well-qualified tutors who have many years of industry experience and continue to work in the sector. They have specialist qualifications and knowledge to bring to their teaching
- Benefit from our links with local hair salons and employers
- Enrichment opportunities in health and safety, healthy living and basic first aid
- Learn in a realistic, modern salon environment
- Learn from industry-experienced and well qualified tutors, many of whom still work in the industry
- Showcase your skills in inter-college competitions and WorldSkills
- Close links with local employers from the industry including local theatre groups, schools and salons
- Guest speakers and masterclasses from successful former students and local employers
- Learn how to network and set-up effective social media sites
- You'll have the opportunity to assist Level 3 Media Make-Up students on location in theatres, fashion shows and more. You'll also gain important industry experience throughout your course

ENGLISH AND MATHS

If you haven't achieved GCSE English and maths at grades 4 or above you will undertake these qualifications alongside your main programme.



Future Careers...

IN HAIR AND BEAUTY

The hair and beauty sector is ideal for those who have a creative flair, enjoy helping people look and feel good about themselves and have a passion for keeping up with the latest trends.

TYPES OF ROLES AVAILABLE:

HAIRDRESSER OR BARBER

Hairdressers and Barbers cut, shave, colour and style customers' hair.

Average salary - £24,750**

Day-to-day tasks:

Talk to customers and discuss styling ideas, wash, cut and style hair, apply colours, tints, braids and hair extensions, trim and shape beards and moustaches, order stock, take payments and make appointments.**

Working environments:

You could work in a salon, at a client's home, at a health spa, at an adult care home, on a cruise ship or in a barbershop.

BEAUTY THERAPIST

Beauty Therapists provide face and body treatments to help clients look and feel better.

Average salary - £20,500**

Day-to-day tasks:

Give facials, do makeovers and advise on make-up, shape eyebrows and colour eyelashes, give manicures, pedicures or other nail treatment such as extensions and nail art, remove unwanted facial and body hair and do non-surgical skin improvement treatments.**

Working environments:

You could work in a salon, at a health spa, on a cruise ship, in a hotel or from home.

In-demand skills that commonly appear in job descriptions for roles within the hair and beauty sector include*:

- Customer Service
- Communication
- Detail Orientated
- Teamwork
- Organisation Skills

*Information from EMSI 2024

**Information from nationalcareers.service.gov.uk

Engineering

GEAR UP FOR YOUR FUTURE IN OUR HANDS-ON, STATE-OF-THE-ART WORKSHOPS.

The UK needs more engineers, so if you're interested in becoming an Engineer or a Welder, you can learn your trade in our industry-standard facilities using the latest equipment. You can choose from a range of Engineering courses, all taught by industry-experienced staff who have strong links with the sector. These courses will prepare you to move straight into employment in the industry or on to Higher Education.

ENGINEERING

You will train in our high-spec workshops with modern equipment which reflect the tools and resources used in industry, and be taught by industry-experienced tutors who bring a wealth of knowledge and enthusiasm to their teaching.

Each area of engineering is unique and our courses will develop your practical skills and theoretical understanding to allow you to specialise in your chosen area.

ENGLISH AND MATHS

If you haven't achieved GCSE English and maths at grades 4 or above you will undertake these qualifications alongside your main programme.

PPE SAFETY

All Personal Protective Equipment will be provided; however, students must purchase their own scientific calculators.

PATHWAYS - ENGINEERING

Level 2	Engineering Operative - Mechanical Apprenticeship Engineering Operative - Fabrication and Welding Apprenticeship Lean Manufacturing Operative Apprenticeship Machining Technician Apprenticeship T Level Foundation
Level 3	Maintenance and Operations Engineering Technician Apprenticeship Plate Welder Apprenticeship T Level in Engineering, Manufacturing, Processing and Control
Level 4/5	HNC/HND in General Engineering HNC/HND in Mechanical Engineering HNC/HND in Electrical and Electronic Engineering

Your level will be discussed at interview



Engineering

ENGINEERING

Engineering has always been at the heart of British industry – now it's your turn to influence the next step of British engineering. We have a range of engineering courses taught by our industry-experienced staff in our purpose-built facilities.

Our Engineering courses are taught in our high-spec workshops packed with modern equipment which reflect the tools and resources used in industry. You'll learn from our industry-experienced teachers who bring a wealth of knowledge and enthusiasm to their teaching. Each area of engineering is unique and our courses will develop your practical skills as well as your theoretical understanding of Engineering, to allow you to specialise in your chosen area.

WHAT WILL I STUDY?

- Complying with Health and safety
- Working effectively and efficiently
- Communication technical information
- Four or more Optional units (these can be selected to meet the students needs)
- Producing Hand fitting components
- Preparing and using lathes
- Preparing and Using Milling Machines
- Preparing and using semi-automatic MIG, MAG and flux cored arc welding equipment
- Producing CAD Models (Drawings) using a CAD System
- Producing Platework Components and Assemblies
- Cutting and Shaping Materials using Thermal Cutting Equipment

Level 3 Engineering will consist of:

- Engineering principles and mathematics
- Apply mathematical and physical science principles
- Develop two-dimensional (2D) detailed drawings and three-dimensional (3D) models using a computer-aided design (CAD) system
- Investigate the operation of common electronic test and measurement devices
- Learn about the design and manufacture of electronic printed circuit boards
- Gain an understanding of commercial engineering, for example key business activities, cost control, quality systems and value management, which is used by engineering organisations to create value
- measure and test analogue and digital circuits to diagnose faults
- Solve electrical, electronic and mechanical-based engineering problems
- Health and safety, team work and interpreting and creating computer-aided engineering drawings
- Design and manufacture of products
- Commercial principles and understanding and application of quality systems



WHY STUDY HERE?

- Work in a modern engineering facility with industry-standard equipment
- Learn from industry-experienced tutors
- Visit Engineering industry events
- Gain work experience
- Hear from guest speakers from the Engineering industry

WHAT CAREERS OR STUDIES COULD I PROGRESS ON TO?

- Maintenance Engineer
- Calibration Technician
- Engineering Technician
- Manufacturing Technician
- Welder or Fabricator
- Civil Engineer
- Energy Engineer
- Structural Engineer
- Higher Level Courses

PPE SAFETY

All Personal Protective Equipment will be provided; however, students must purchase their own scientific calculators.

ENGLISH AND MATHS

If you haven't achieved GCSE English and maths at grades 4 or above you will undertake these qualifications alongside your main programme.

Future Careers...

IN ENGINEERING

The engineering sector is ideal for those who have the ability to come up with new ways of doing things, have problem-solving skills and enjoy working practically.

TYPES OF ROLES AVAILABLE:

MECHANICAL ENGINEER

Mechanical Engineers design, build and install machinery used in industries like power, engineering, transport and manufacturing.

Average salary - £39,000**

Day-to-day tasks:

Turn research ideas into technical plans using computer aided design software, test mechanical systems and analyse data to make improvements, assess the safety of mechanical machinery and equipment, oversee maintenance programmes in buildings, power stations and production plants, manage a project team of technicians, designers and other engineering professionals.**

Working environments:

You could work in an office, in a factory or visit sites.

WELDER

Welders cut, join and shape metals, alloys and other materials in the manufacturing, construction and engineering industries.

Average salary - £34,500**

Day-to day-tasks:

Follow drawings and instructions, prepare materials to be joined and select the right welding procedure, calibrate tools and operate welding equipment, inspect and test the quality of joins using precision measuring instruments and dismantle and cut up metalwork, for example during demolitions.**

Working environments:

You could work in a workshop, on a construction site or on a demolition site.

In-demand skills that commonly appear in job descriptions for roles within the engineering sector include*:

- Communication
- Management
- Leadership
- Customer Service
- Problem Solving

*Information from EMSI 2024

**Information from nationalcareers.service.gov.uk

Motor Vehicle

GEAR UP FOR YOUR FUTURE IN OUR STATE-OF-THE-ART MOTOR VEHICLE WORKSHOPS. GAIN HANDS-ON EXPERIENCE IN SUSTAINABLE ENERGIES WITH OUR HYBRID AND ELECTRIC VEHICLES.

If you are interested in a career working with motor vehicles you can train in our high-spec modern facilities, which reflect those used in industry. You will gain practical skills and learn how to fix and diagnose faults in all components of a traditional motor vehicle. You will also have the opportunity to gain experience on hybrid and electric vehicles – equipping you with sought after, future-proofed and in-demand skills in a fast-changing industry.

The Motor Vehicle Industry is quickly evolving, with a new focus on electric, hybrid, and hydrogen fuel technologies. Although the Internal Combustion Engine will be current for some years yet, Electric and Hybrid practices are becoming increasingly necessary to implement in the curriculum.

All courses allow the opportunity for candidates to become compliant with Automotive Vehicle Systems and Maintenance Activities, which include but are not limited to the removal and replacement of components and diagnostic activities across a range of vehicle manufacturers.

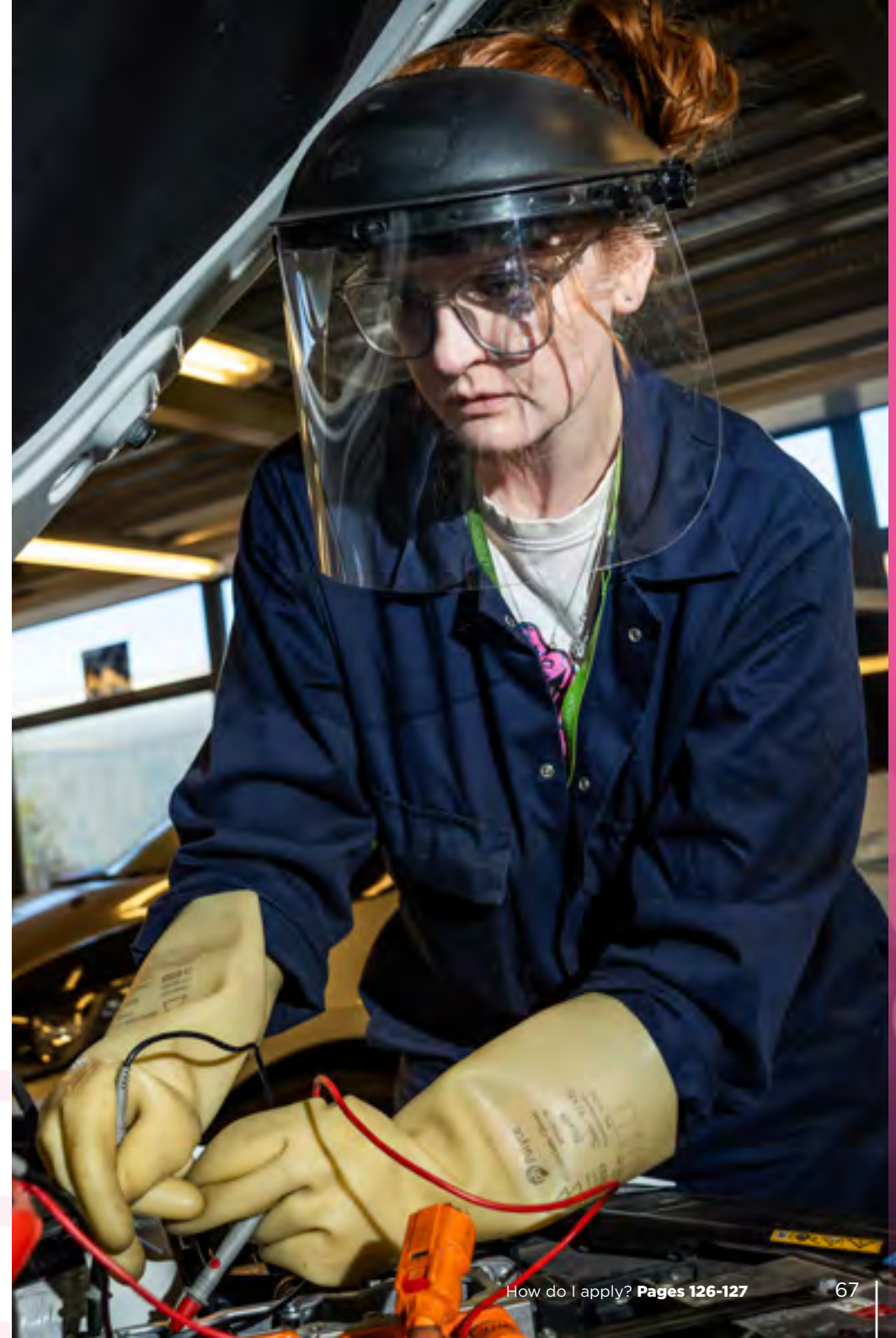
PATHWAYS - MOTOR VEHICLE

Entry Level	Vehicle Systems Maintenance
Level 1	Automotive Maintenance Electric/Hybrid Vehicle Awareness
Level 2	Vehicle Fitting Principles Light Vehicle Maintenance and Repair Auto-care Technician Apprenticeship Electric/Hybrid Vehicle Routine Maintenance Activities
Level 3	Automotive Refrigerant Handling Service and Maintenance Technician Apprenticeship

Your level will be discussed at interview

ENGLISH AND MATHS

If you haven't achieved GCSE English and maths at grades 4 or above you will undertake these qualifications alongside your main programme.



Motor Vehicle

MOTOR VEHICLE

Our courses start at Entry Level 3, and learners can progress towards a Level 3 Apprenticeship, provided entry criteria are met. Tasks undertaken within the workshops range from identification of components, removal and replacement of components, and advanced diagnostic techniques and capabilities across all courses on offer.

WHAT WILL I STUDY?

- Vehicle System Maintenance
- Vehicle Repair
- Advanced Diagnostic Techniques
- Introduction to working with Hybrid and Electric Vehicles
- Component Identification and Replacement

WHY STUDY HERE?

The Motor Vehicle Department has recently undergone extensive expansion and investment to become a Sustainable Automotive Training Centre.

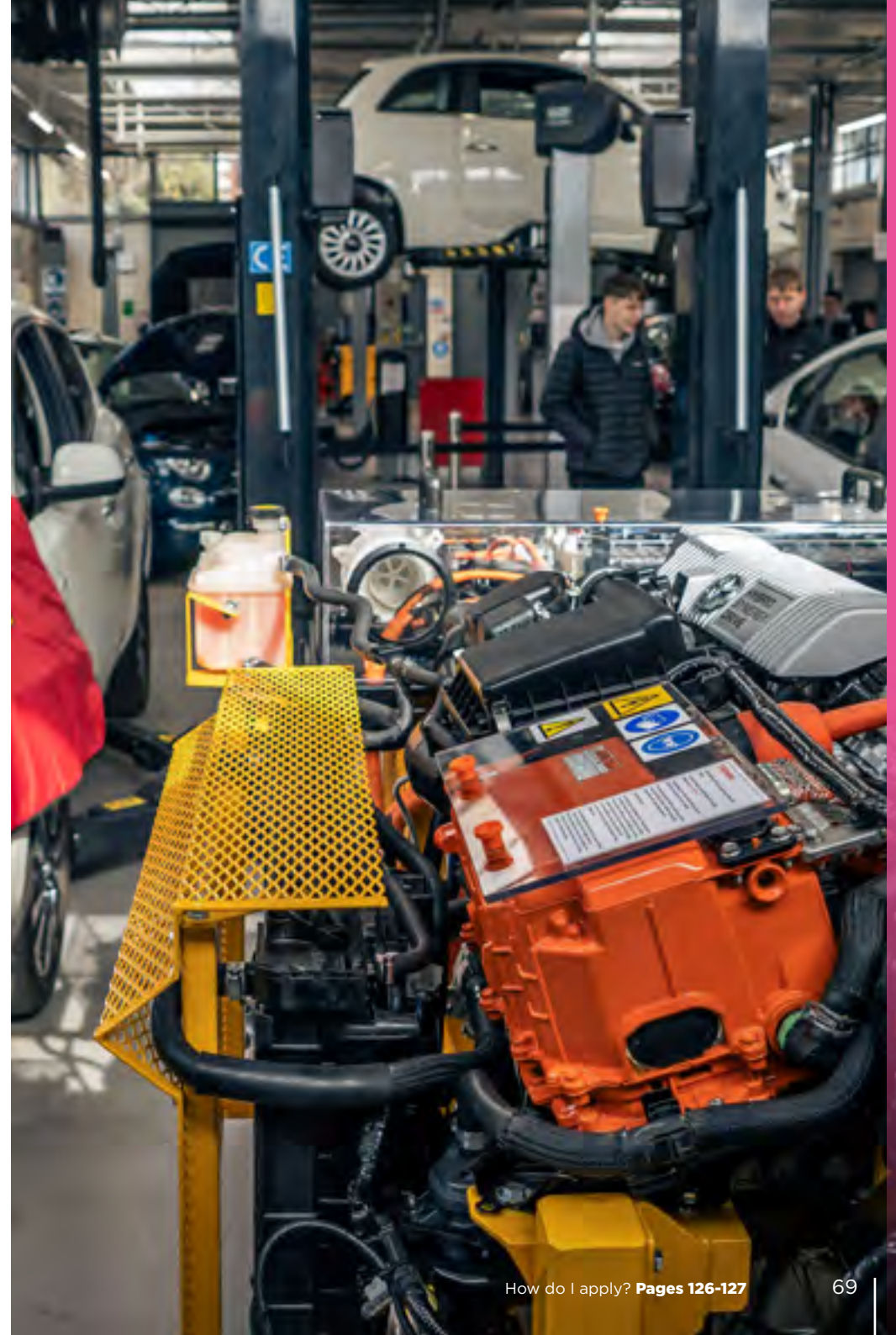
Our industry-qualified staff regularly undertake training to remain current with ever changing technologies within the motor vehicle department and enhance the delivery of sector-specific skills and knowledge.

The department offers an environment to train in where the team strives for a quality learner experience and an enjoyable atmosphere on the latest vehicle advancements in vehicle system maintenance, repair, and diagnostics.

WHAT CAREERS OR STUDIES COULD I PROGRESS ON TO?

Upon successful completion of the courses on offer and experience within the Motor Vehicle Sector, learners could progress into the following employment opportunities:

- Tyre Technician
- Vehicle Inspection Technician
- Maintenance and Repair Technician
- Diagnostic Technician
- Master Technician
- MOT Tester
- Service Management
- Apprenticeship Opportunities





Future Careers...

IN MOTOR VEHICLE

The Motor Vehicle sector is ideal for those who have an enthusiasm for repairing cars, have problem-solving skills and the ability to use their own initiative.

TYPES OF ROLES AVAILABLE:

MOTOR MECHANIC

Motor Mechanics repair and service cars and vans.

Average salary - £26,500**

Day-to-day tasks:

Find and diagnose faults using hand tools or a computer, advise customers on what repairs are needed, repace or replace faulty parts, check stock levels and update vehicle service records and work with high voltage batteries if you work on hybrid or electric vehicles.**

Working environments:

You could work at a garage. Your working environment may be noisy, dirty and physically active.**

MOTOR VEHICLE BREAKDOWN ENGINEER

Motor Vehicle Breakdown Engineers help people whose vehicles have broken down.

Average salary - £32,500**

Day-to-day tasks:

Respond to breakdown calls and make sure the vehicle, driver and passengers are safe, exam vehicles to find and diagnose faults and carry out roadside repairs, tow or transport vehicles to a garage, complete record sheets for each job.**

Working environments:

You could work at a garage, from a vehicle or on call-out to wherever the car owner is. Your working environment may be outdoors some of the time and you'll travel often.**

In-demand skills that commonly appear in job descriptions for roles within the motor vehicle sector include*:

- Communication
- Customer Service
- Sales
- Detail Oriented
- Management

*Information from EMSI 2024

**Information from nationalcareers.service.gov.uk

English and Maths

MAKE EVERYDAY LIFE EASIER WITH ESSENTIAL ENGLISH AND MATHS SKILLS.



English and maths skills are essential for work and everyday life, as they enhance your career prospects and open the door to further study. If you didn't achieve your GCSE English and maths at school, or if you'd like to improve your grade, you can study for these alongside your chosen course.

Our English and maths classes are taught in large, bespoke Maths and English Zones (MEZOs) at each of our College campuses where you can work on personalised learning activities.

You'll learn from a talented team of tutors who tailor their teaching to your learning needs. Sessions include: taught lessons, independent learning, group work and online learning for greater flexibility.

If you have already achieved a GCSE grade 4 or equivalent in maths and English, you can choose to study these subjects alongside your chosen course to further improve your skills*.

*If you're looking to improve your grades please note you may have to contribute towards exam fees.



Flex

LEARN THE SKILLS YOU NEED TO PROGRESS TO EMPLOYMENT OR VOLUNTEERING IN OUR FLEX DEPARTMENT.

Our FLEX Department is for students with Special Educational Needs and Disabilities (SEND) or High Needs. You can choose from one of our four project-led pathways depending on your personal aims and ambitions; Horizons, Pre-internships or Supported Internships with each pathway intended to help you towards one of two key goals - adulthood and independence or employment. We'll also help you with your English, maths and IT skills.

We work closely with the other Colleges in our Group to provide access to as many experiences as possible, including theatre and drama productions at Rotherham College and experience in Animal Care, Horticulture and use of the forest school at Dearne Valley College, so whichever one of our Colleges you're based at you'll have the opportunity to meet people from other areas and enjoy new experiences.

We have strong partnerships with local businesses and organisations and work with them to get involved in community projects. You'll have the chance to showcase your skills in competitions such as Sewhat and inter-college competitions.

You'll also have the chance to take part in a wide range of health and wellbeing activities, from fitness classes to music and art therapy sessions.



FLEX **HORIZONS**

On this course you will have the opportunity to try taster sessions in different vocational areas, giving you the chance to get a feel for the sectors that you are most interested in.

You will develop your employability and personal and social development skills. A focus is placed on building confidence and communication skills to aid your mental health.

On this pathway you will attend College 15 hours per week, typically over three days.

WHAT WILL I STUDY?

- Employability Skills
- Personal and Social Development Skills
- Independence Skills
- Communication
- Study Skills
- Vocational Specific Units/Skills
- English, Maths and IT

WHAT CAN I DO NEXT?

You may move on to another FLEX pathway such as Pre-internships or Supported Internships or into a vocational study programme. You may also progress to supported living or semi-independent living depending on your individual abilities.

ENTRY REQUIREMENTS

- There are no formal entry requirements for this course. However, this course is with a focus on students with low self-esteem, who are deemed vulnerable and who may have specific social, emotional and mental health and/or behavioural needs

FLEX **PRE-INTERNSHIPS**

Pre-internships are designed to introduce students with SEND and High Needs to working life and are offered in a range of different sectors including Construction, Business Administration, Hair and Beauty and Motor Vehicle.

The aim is to support you to develop the confidence and knowledge, skills and behaviours to become employable in your chosen sector.

On a pre-internship you will attend College for two days (10 hours) and work placement for one day (5 hours) each week.

WHAT WILL I STUDY?

- Employability Skills
- Personal Development and Independence
- English, Maths and IT

WHAT CAN I DO NEXT?

You may move on to another FLEX pathway such as Supported Internships or move into employment or volunteering in your chosen sector.

ENTRY REQUIREMENTS

You must have an EHCP in place

PLEASE NOTE

You must have an EHCP in place to access the pre-supported internship as well as the supported internship.

FLEX **SUPPORTED** **INTERNSHIPS**

A Supported Internship is a study programme aimed at giving young people (aged 16-24) with an Education, Health and Care Plan experience in the workplace within a supported environment.

It is a platform for you to further develop your skills and experience in a structured way. You will take part in the programme with one of our partner employers and spend at least two days (10 hours) per week working in different areas to gain valuable experience with the support of an on-site Job Coach.

You will spend one day (5 hours) at College each week.

WHAT WILL I STUDY?

- Employability Skills
- Personal Development and Independence
- English, Maths and IT
- This course has an emphasis on being out in the workplace developing valuable employability skills, you will spend the majority of your time with an employer

WHAT CAN I DO NEXT?

You could move into employment, a voluntary employment or potentially move into an apprenticeship in your chosen sector.

ENTRY REQUIREMENTS

- To start a Supported Internship you will need an Education, Health and Care Plan (EHCP), and be committed to participating fully in a work placement adhering to employer expectations and following policies



Education and Childcare Services

NURTURE, INSPIRE AND HELP CHILDREN TO REACH THEIR FULL POTENTIAL, AND TAKE YOUR FIRST STEPS TO A CAREER IN THE EARLY YEARS AND EDUCATION INDUSTRY.

Nurture your caring side with our nationally recognised qualifications. If you want to develop and shape the next generation in a fun and rewarding job, then a career in Education and Childcare could be the perfect path for you.

With our industry-approved qualifications, you'll teach, support, and develop children as they progress through the stages of early childhood.

On our courses, you'll learn through a combination of work placements and classroom sessions. To ensure that you gain the hands-on experience needed in industry, we work with a range of employers, such as:

- Primary schools
- Day nurseries
- Preschools
- Children's centres
- Specialist schools

Whilst you study with us, you'll learn key skills including communication with children and adults, safeguarding, health and safety, childhood illnesses, play, and learning. You'll also take part in practical activities such as making story sacks, cooking and healthy eating for children, painting, and displays.

PATHWAYS	
Level 1	Caring for Children
Level 2	Working with Children in Early Years and Primary Settings T Level Foundation
Level 3	Childcare and Education (Early Years Educator) Supporting Teaching and Learning (Adult Course) T Level in Education and Early Years
Level 4/5	Foundation Degree in Early Childhood Studies
Level 6	BA Hons in Early Childhood Studies
Your level will be discussed at interview	

You'll have the chance to hear from industry experts in guest sessions and learn more about the variety of careers and settings available in Education and Childcare.

Outside of the classroom, you'll have the chance to manage fundraising events and take part in inter-college competitions to showcase your skills.

WE OFFER 6 LEVELS IN THIS SUBJECT



Education and Childcare Services

EDUCATION AND CHILDCARE SERVICES

This course is designed to stimulate interest and encourage your understanding of the skills required to care for children. Whilst studying on this course you will develop the skills needed to help children grow, learn and develop.

WHAT WILL I STUDY?

- Child Development
- Play and Learning
- Safeguarding
- Inclusive Strategies
- Child Health
- Nutrition
- Physical Activity for Children
- Observation and Assessment

WHY STUDY HERE?

Learn from industry-experienced and well qualified tutors who have spent many years in the Early Years sector, and have specialist qualifications and knowledge to bring to their teaching.

You can participate in regular work placements to boost your skills. Take part in cross- college events. Hear from a range of guest speakers from children's services, day nurseries, primary schools, special schools and children's centres.

You'll be able to benefit from our links with Childcare and Education employers including nurseries, primary schools, day care, children's centres, childminders, and special schools. As we have an excellent working partnership with these placement providers, many students are employed shortly after leaving college.

WHAT CAREERS OR STUDIES COULD I PROGRESS ON TO?

- Early Years Educator (Nursery, Pre-School, Children's Centre)
- Teaching Assistant
- Play Therapist
- Childminder
- Family Support Worker
- Children's Holiday Rep
- Higher Level Courses

ENGLISH AND MATHS

If you haven't achieved GCSE English and maths at grades 4 or above you will undertake these qualifications alongside your main programme.



CASE STUDY

Theo Kitchen

Childcare Level 2

“I enjoy everything about my course and the teachers are incredibly supportive. After my course I plan on continuing my studies in Childcare.”

Future Careers...

IN EDUCATION AND CHILDCARE SERVICES

The education and childcare services sector is ideal for those who are patient, caring and have a passion for helping children to develop and learn to reach their full potential.

TYPES OF ROLES AVAILABLE:

NURSERY WORKER

Nursery Workers help babies and children up to 5 years old to develop and learn in a safe and supportive setting.

Average salary - £23,400**

Day-to-day tasks:

Plan and supervise activities like arts and crafts, music and cooking, help children to learn numeracy and language skills through games, singing and story telling, take children on outings, feed and change babies, keep indoor and outdoor work areas clean and safe, record children's development and share with parents, carers and other staff.**

Working environments:

Nurseries, Pre-schools and Children's Centres

TEACHING ASSISTANT

Teaching assistants support teachers and help children with reading, writing and learning activities.

Average salary - £17,500**

Day-to-day tasks:

Help teachers prepare lesson materials, set up and tidy classrooms for lessons, work with students to make sure they understand, record and report the progress students make, look after children who are upset or unwell and lead classes with help from the teacher.**

Working environments:

Schools or special needs schools.

In-demand skills that commonly appear in job descriptions for roles within the education and childcare services sector include*:

- Teaching
- Communication
- Management
- Enthusiasm
- Planning

*Information from EMSI 2024

**Information from nationalcareers.service.gov.uk

Health Science and Care

IF YOU'RE LOOKING FOR A CAREER THAT IS CHALLENGING BUT REWARDING, WE CAN HELP YOU TAKE YOUR FIRST STEPS TOWARDS A CAREER IN THE CARING PROFESSIONS.

Our Health Science and Care courses start with a Level 1 Certificate and progress all the way to a Level 5 Foundation Degree. We have a range of both 16-18 and adult courses available.

Tasks undertaken within the lessons include learning how to approach patients and service users correctly as well as demonstrating the correct code of conduct for the sector.

You will learn a variety of human biology subjects, including Anatomy and Physiology, Infection and immunity, and Microbiology. You will also be assessed on your ability to adhere to various laws and demonstrate essential practise such as safeguarding. You will also be assessed on your hands-on skills developed in health and social settings.

Some of our courses also require mandatory placement in the health and social care sectors in a real work environment to support learning.

PATHWAYS	
Level 1	Mental Health (Adult Course) Progression in Health and Social Care (Adult Course)
Level 2	GCSE Biology Health and Social Care T Level Foundation
Level 3	Access to Health Science Professions (Adult Course) Health and Social Care T Level in Health
Level 4	Professional Practice in Health and Social Care
Level 5	Foundation Degree in Professional Practice in Health and Social Care
Your level will be discussed at interview	



Health Science and Care

HEALTH SCIENCE AND CARE

The Health Science and Care industry is a rapidly evolving and expanding sector, with a plethora of specialisations accessible. We cater to this wide range of specialties, giving learners the foundations and opportunity to progress along their chosen pathway.

All courses allow the opportunity for candidates to become fully compliant with the practices, skills, and behaviours essential to working in the sector. We provide both classroom-based and practical teaching to give our learners the best opportunity for success.

WHY STUDY HERE?

The Health Science and Care department has developed over the years to offer learners a very wide range of courses to cater for all types of learners. Whichever level you choose to join us at, we can help you progress and work with us to build your confidence, knowledge, skills and behaviours and to gain the qualifications you need to work in the sector you choose to.

Our staff are highly qualified both academically and in practise and they undertake regular training to remain current with ever changing industry.

WHAT CAREERS OR STUDIES COULD I PROGRESS ON TO?

Upon successful completion of the courses on offer and experience within the Health Science and Care sector, learners could progress into the following employment opportunities:

- Midwifery
- Nursing
- Social Work
- Occupational Therapy
- Diagnostic Radiography
- Paramedic Practice
- Physiotherapy
- Therapeutic Radiography
- Mental Health Nursing
- Counselling
- Operating Department Practitioner
- Health Related Degree Programmes
- Apprenticeship Opportunities

ENGLISH AND MATHS

If you haven't achieved GCSE English and maths at grades 4 or above you will undertake these qualifications alongside your main programme.

WE OFFER T LEVELS
IN THIS SUBJECT





Future Careers...

HEALTH SCIENCE AND CARE

The health science and care sector is ideal for those who have a passion for caring for others and includes jobs in personal care and healthcare.

TYPES OF ROLES AVAILABLE:

MIDWIFE

Midwives support pregnant women and their babies before, during and after, childbirth.

Average salary - £39,000**

Day-to-day tasks:

Advise pregnant women and check they are healthy, run pregnancy classes, deliver babies, advise on ways to manage pain during labour, give advice after the baby is born, visit homes to check on parents and the baby.**

Working environments:

You could work at a client's home, at a health centre, at a GP practice or in an NHS or private hospital.

SOCIAL WORKER

Social workers help to protect vulnerable children and adults from harm or abuse and support people to live independently.

Average salary - £38,500**

Day-to-day tasks:

Meet individuals and families to review their needs, make support plans, help clients develop and maintain independent living skills, keep clients safe and take action to protect them when necessary, work closely with communities, health professionals and other agencies, keep records, write reports and discuss cases with your supervisors.**

Working environments:

You could work in an office, NHS or private hospital, an adult care home or children's care home.

In-demand skills that commonly appear in job descriptions for roles within the health science and care sector include*:

- Communication
- Management
- Enthusiasm
- Compassion
- Leadership

*Information from EMSI 2024

**Information from nationalcareers.service.gov.uk

Protective Services

DEVELOP THE KEY SKILLS NEEDED TO CARE FOR YOUR COMMUNITY.

PROTECTIVE SERVICES

If a career working in a frontline or supporting role for the emergency services or armed forces sounds like the job for you, a course in protective services could give you a head start.

Studying Protective Services at North Notts College you'll develop skills sought-after by employers including teamwork, initiative, leadership and communication so that you can achieve your dream career in the uniformed and non-uniformed protective services industry. There's also the opportunity to gain additional qualifications alongside your studies including emergency first aid, canoeing and mountain biking.

With us, what you learn is what you'll use. Our talented team of tutors bring with them experience of working in the protective services sector.

They bring passion and professional expertise to your learning, so you're safe in the knowledge that learning with us means you have what it takes for a role in protective services.

PATHWAYS - PROTECTIVE SERVICES

Level 2	Diploma for Entry to the Uniformed Services
Level 3	Diploma for Entry to the Uniformed Services Diploma in Policing Extended Diploma for Entry to the Uniformed Services
Your level will be discussed at interview	

ENGLISH AND MATHS

If you haven't achieved GCSE English and maths at grades 4 or above you will undertake these qualifications alongside your main programme.

UNIFORM

You will require sports kit including running trainers. More information will be provided during induction week and taster sessions.



Protective Services

PROTECTIVE SERVICES

In our practical based protective services courses, you'll have the chance to get involved in adventurous activities and pursuits. You'll also be encouraged to take part in sport and other competitions to showcase your skills and abilities and build your confidence.

Alongside your studies you'll hear from and take part in activities and demonstrations from currently serving Police Officers, Firefighters and members of the Armed Forces; giving you an insight into what your future career might look like.

WHAT WILL I STUDY?

- Protective Service Skills
- Employment in the Uniformed Services
- Health and Fitness for Entry into the Protective Services
- Sport and Recreation
- Teamwork and Leadership
- Behavioural Psychology and Discipline
- Teamwork and Leadership
- Current Affairs and Security Threats
- Criminology and Custodial Care
- Planning Emergency Response

UNIFORM

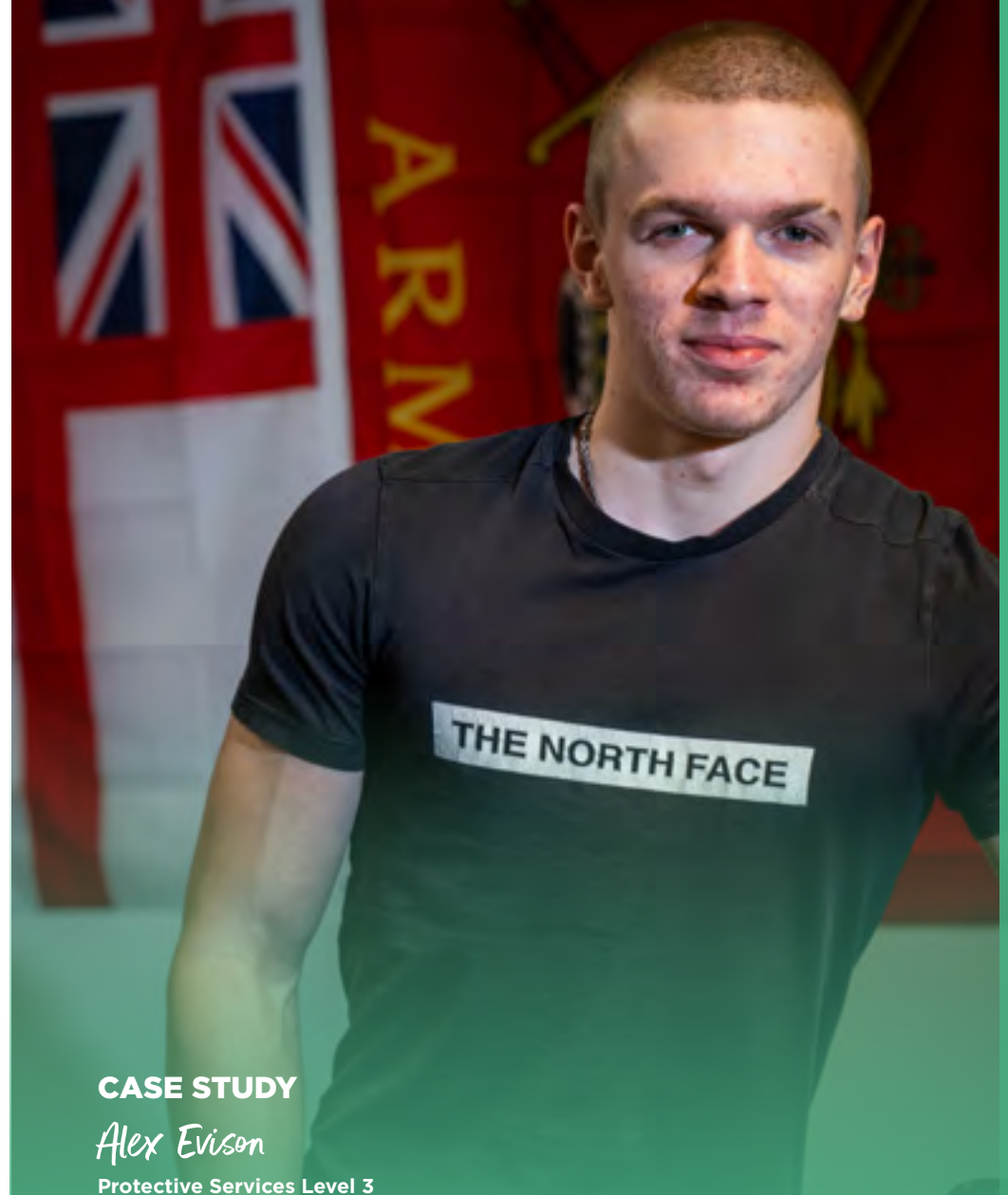
You will require sports kit including running trainers. More information will be provided during induction week and taster sessions.

WHY STUDY HERE?

- Learn from teachers with a range of experience in the Protective Services sector including a Firefighter and an R.A.F Officer
- We offer a supportive learning environment
- Access to a high-quality gym and fitness suite with specialist equipment
- Work experience opportunities with local employers
- Events and guest speaker slots from the military and other uniformed services
- You can participate in outdoor adventurous activities and college challenges including cycling, hill walking and orienteering

WHAT CAREERS OR STUDIES COULD I PROGRESS ON TO?

- Police Force
- Ambulance Service
- Fire and Rescue Service
- Prison Service
- Armed Forces



CASE STUDY

Alex Evison

Protective Services Level 3

“I chose North Notts College because the facilities are great and the tutors are really supportive. After I finish my course, I plan on joining the Police.”

Future Careers...

IN PROTECTIVE SERVICES

The protective service sector is ideal for those who want to work in a fast-paced environment, have an interest working frontline supporting the public and have a passion for fitness.

TYPES OF ROLES AVAILABLE:

PRISON OFFICER

Prison Officers supervise inmates in prisons, remand centres and young offenders institutions.

Average salary - £34,650**

Day-to-day tasks:

Keep prisoners secure and support anyone who is vulnerable, carry out security checks and searches, maintain order sometimes using authorised physical control and restraint, go with prisoners on external visits, update records and write reports.**

Working environments:

You could work in a prison or correctional facility.

POLICE COMMUNITY SUPPORT OFFICER

Police Community Support Officers work in a neighbourhood policing team to help deal with and prevent crime.

Average salary - £22,500**

Day-to-day tasks:

Go on highly-visible foot and cycle patrols, offer advice on crime prevention, deal with anti-social behaviour, talk with young people and visiting schools, provide support at large public gatherings such as sports events and public demonstrations, use social media channels, online forums and force websites to develop links with local communities.**

Working environments:

You could work in the community or on a patrol.

In-demand skills that commonly appear in job descriptions for roles within the protective services sector include*:

- Communication
- Customer Service
- Management
- Detailed Oriented
- Leadership

*Information from EMSI 2024

**Information from nationalcareers.service.gov.uk



Sport and Physical Activity

TURN YOUR PASSION INTO A CAREER WITH OUR COURSES IN SPORT.

SPORT

If you love sport and physical fitness, our range of Sport courses will teach you a wide-variety of skills including gym instructing, personal training, fitness testing, coaching, sports massage and the importance of nutrition and diet.

You'll gain leadership, communication and teamwork skills that are important for a career in the fitness industry.

You will learn core elements of sport in our sporting facilities, including gym and sports halls, as well as out in industry. You will link up with local sporting organisations, where you'll have the opportunity to undertake placements and work experience with a variety of employers.

This will help you gain an understanding of what it's like to work in the fitness industry and learn from those doing the job you want. You'll also have the chance to gain additional qualifications as part of your course in subjects including Anti-Doping, Personal Training and more.

On our Sport courses you will also have the opportunity to visit leading sporting organisations across the UK, where previous students have visited places such as the Etihad Stadium, the English Institute Of Sport and St. George's Park, home of England Football.

Progression from our Sport courses can take you into employment in the sport and leisure industry, or on to further study.

PATHWAYS - SPORT

Level 2	Certificate in Sport
Level 3	Diploma in Sport and Physical Activity Extended Diploma in Sport and Physical Activity
Your level will be discussed at interview	

UNIFORM

Sports kit will be required, however, financial support is available for those eligible. More information will be provided during induction week.



Sport and Physical Activity

SPORT AND PHYSICAL ACTIVITY

Our courses, delivered in Retford and Worksop, are suitable for all abilities.

Our dedicated tutors have played, competed and coached sports at a regional, national, and international level. Using their wealth of experience, they will help you gain leadership, communication, and teamwork skills in your chosen pathway.

We have excellent links with local businesses in the industry such as Kixx, Retford Leisure Centre, Retford and Retford United Football Club, Retford Tennis Clubs, Retford Athletics and Curly Athletes who all support with opportunities to undertake placements and gain work experience. There's also the opportunity to complete work experience abroad with our Erasmus scheme.

This will help you gain an understanding of what it's like to work in the fitness industry and learn from those doing the job you want.

UNIFORM

Sports kit will be required, however, financial support is available for those eligible. More information will be provided during induction week.

You'll also have the chance to gain additional qualifications and Continuous Professional Development as part of your course in subjects including:

- Anti-Doping
- GDPR
- Prevent
- Mental Health First Aid
- First Aid Course
- Manual Handling
- FA Playmaker
- Introduction to Fustal
- Concussion guideline
- Sudden Cardiac arrest
- Safeguarding for All
- Swimming



WHAT WILL I STUDY?

- Participating in Sport
- Understanding Business in Sport
- Preparing to Work in the Sport and Leisure Industry
- Sport Coaching
- Sport Science
- Working in Sport

WHY STUDY HERE?

- Learn in our top-quality fitness suites and sports halls
- Utilise cutting-edge tools while you gain expertise in business, personal training, nutrition, and sports coaching
- You will have the opportunity to attend educational visits and be exposed to industry experts
- This course has been supported by a number of universities, including: London South Bank University, Southampton Solent University and University of Huddersfield

WHAT CAREERS OR STUDIES COULD I PROGRESS ON TO?

- Career Pathways
- Physical Education Teacher
- Sports Coach
- Fitness Industry
- Sport Science
- Sport Development
- Sport Management
- Sporting Analysis
- Sports Media and Journalism
- Nutrition
- Wellbeing and Education

ENGLISH AND MATHS

If you haven't achieved GCSE English and maths at grades 4 or above you will undertake these qualifications alongside your main programme.

Future Careers...

IN SPORT AND PHYSICAL ACTIVITY

The sports sector is ideal for those who have a passion for fitness and wish to share that drive with others.

TYPES OF ROLES AVAILABLE:

FITNESS INSTRUCTOR

Fitness Instructors organise exercise programmes to improve people's health and fitness.

Average salary - £22,000**

Day-to-day tasks:

Assess people's fitness and create personal exercise programmes, demonstrate activities, exercise machines and weights, provide advice on having a healthy lifestyle and update client records.**

Working environments:

You could work in an office, at a school, on a sports field, at a fitness centre or at a college.

OUTDOOR ACTIVITIES INSTRUCTOR

Outdoor Activities Instructors lead trips and teach skills in activities like hill walking, climbing, canoeing, skiing and snowboarding.

Average salary - £23,000**

Day-to-day tasks:

Plan and prepare activities, explain, advise on and demonstrate activities, instruct in specialist areas such as sailing or climbing, make sure all equipment and facilities are safe, explain safety procedures**

Working environments:

At an activities centre or in the countryside.

In-demand skills that commonly appear in job descriptions for roles within the sport sector include*:

- Communication
- Customer Service
- Enthusiasm
- Management
- Leadership

*Information from EMSI 2024

**Information from nationalcareers.service.gov.uk



Careers Index

If you have a dream job or career in mind, you can find progression routes to the below professions on their corresponding page numbers.

BUSINESS, COMPUTING AND DIGITAL DESIGN **PAGES 44-49**

- App Developer
- Data Analyst
- Database Administrator
- Digital Marketer
- IT Consultant
- IT Technician
- Software Developer
- Software Engineer
- User Experience Developer
- Website Designer

CONSTRUCTION **PAGES 32-43**

- Bricklayer
- Carpenter
- Construction Manager
- Domestic Heating Technician
- Electrician
- Joiner
- Kitchen Fitter
- Labourer
- Plumber
- Shop Fitter

EDUCATION AND CHILDCARE SERVICES **PAGES 76-83**

- Childminder
- Early Years Practitioner
- Early Years Teacher
- Family Support Worker
- Nanny
- Nursery Supervisor
- Nursery Manager
- Playworker
- Residential Care Assistant
- Teaching Assistant

ENGINEERING **PAGES 60-65**

- Electrical Engineer
- Fabricator
- Machinist
- Mechanical Engineer
- Technical Support
- Welder

HAIR AND BEAUTY **PAGES 50-59**

- Barber
- Beauty Therapist
- Colour Technician
- Cosmetic Retail Assistant
- Hairdresser
- Hair Extension Specialist
- Make-up Artist
- Massage Therapist
- Nail Technician
- Salon Manager

HEALTH SCIENCE AND CARE **PAGES 84-89**

- Care Worker
- Health Care Assistant
- Health Visitor
- Midwife
- Nurse
- Paramedic
- Physiotherapy Assistant
- Radiographer
- Social Worker
- Support Worker

MOTOR VEHICLE **PAGES 66-71**

- Maintenance Technician
- Motor Trade Sales Assistant
- Motor Vehicle Fitter
- Vehicle Technician

PROTECTIVE SERVICES **PAGES 90-95**

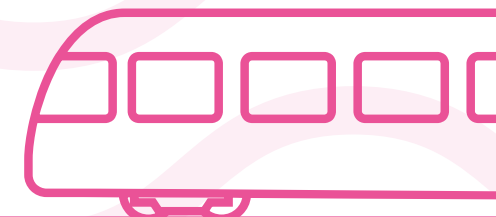
- British Army Officer
- Border Force Officer
- Coastguard
- Firefighter
- Mountain Rescue
- Police Officer
- Prison Officer
- Royal Air Force Officer
- Royal Navy Officer
- Youth Leader

SPORT AND PHYSICAL ACTIVITY **PAGES 96-101**

- Gym Instructor
- Leisure Manager
- Outdoor Activity Instructor
- Personal Trainer
- Sports Coach
- Sports Development Assistant
- Sports Nutritionist
- Sports Therapist

Travelling to College

**WE ARE EASILY ACCESSIBLE
BY BUS, TRAIN AND CAR.**



TRAVELLING TO US...

BY BUS

Our Worksop campus is close to many bus routes across North Nottinghamshire.

The Traveline journey planner can help you plan a route and get information about public transport services:

traveline.info

North Notts College offers a student bus service from Retford to Worksop to make it quicker and easier for you to access College. There is a small fee, however learners who are eligible for bursary are able to have this fee covered. Passes can be picked up from Student Services.

For more information visit:

nnc.ac.uk/information/student-support/student-bus-service

BY TRAIN

North Notts College, Worksop Campus, is located a short walk away from Worksop train station (WRK) and North Notts College.

If you travel a lot by train you could benefit from a railcard.

A 16-17 saver railcard gets you 50% off standard anytime, off peak, advance and season tickets. It is just £30 and is valid for one year or until your 18th birthday, whichever comes first. For more information visit **16-17saver.co.uk**

A 16-25 railcard can get you 1/3 off rail travel for everyone aged 16-25 for just £30 for one year or £70 for three years. For more information visit **16-25railcard.co.uk**

Mature students can also apply for a one year railcard, which can be extended with evidence of continuing to study every year.

BY CAR

We offer free car parking at North Notts College for students and visitors.

POST 16 TRAVEL ASSISTANCE

Nottinghamshire residents under 19 can apply for a post-16 travel assistance pass including half-fare passes, season pass and travel allowance available.

Visit **nottinghamshire.gov.uk/education/travel-to-schools/post-16-mainstream-travel-assistance** for full details and eligibility criteria.

If you live in South Yorkshire, enquire **travelsouthyorkshire.com/1618** about travelling into Bassetlaw District.

For more information on travelling to college visit: **nnc.ac.uk/information/student-support/student-bus-service**

Student Bus Service



HOP ON BOARD!

Our student only bus routes make it easier to get to college from a wide range of areas. Each service will run first thing in the morning, getting you into College for your first lesson and will return at the end of the College day.

There is a small charge per day or multiple travel passes can be purchased for a discounted price.

You may be eligible for funding to pay for your journey to and from College, more information on Financial Support can be found on page 17.

If you are local to Worksop, Retford or the surrounding areas, we also have a student bus service that runs through Retford and Worksop which takes you to Rotherham College and Dearne Valley College (other colleges within our Group). This allows you to study courses across any of the three Colleges.

For more information on our Student Bus Service and details on how to book once you have enrolled, please visit:

nnc.ac.uk/information/student-support/student-bus-service

Please note our bus timetables are subject to change. Check our websites for the most up-to-date information.

SCAN HERE TO VIEW
BUS TIMETABLES



HOW TO BOOK



1

Visit Zeelo website

Visit zeelo.co/rides/rotherham-college-and-dearne-valley-college



2

Select your pass

Choose between a multi-ride travel pass (10, 20, 30 or 50 journeys) or a one day pass (single/return journey)



3

Confirm pass and create Zeelo account

Enter your desired pick-up and drop-off locations and confirm. Follow the steps to create your Zeelo account



4

Select your journeys (travel pass only)

For multi-ride travel passes only, visit 'My Rides' (zeelo.co/my-zeelo), select your pass & book onto the journeys you would like to travel



5

Your coach is booked

You will receive an email before your journey with your tickets, or you can find in 'My Rides'



6

Check your tracking link on the day

You'll receive this via SMS and will also be able to see it via the app. Ensure you arrive 5 mins early to your stop

Our Facilities

AT NORTH NOTTS COLLEGE LEARNING IS ABOUT SO MUCH MORE THAN THE CLASSROOM - IT'S AN EXPERIENCE.



The Fitness Suite

INDUSTRY-TAILORED LEARNING SPACES

We have fantastic facilities designed to reflect real working environments and standards, fitted with the latest equipment and resources, such as our Motor Vehicle Workshop with hybrid and electric cars, so our students can develop the sought-after skills needed in today's workplace.



In our commercial Salon, Hair and Beauty students develop their skills on paying customers. Find out more and book a treatment through the QR-code.

OUTSTANDING LIBRARY

As a student at North Notts College, the library is the ideal place for you to enrich your college experience. Here, you can expand your knowledge or learn a new skill with our helpful resources, or find a quiet spot to study in our comfy study spaces.

STATE-OF-THE-ART FITNESS SUITE

As a student, you have access to a wide variety of different enrichment activities and programmes, including our state-of-the-art student gym. The gym is packed to the brim with all the gear, machines and equipment you'll need to reach your fitness goals, and best of all, it's completely free!

FOOD AND DRINK

We have a wide variety of fresh food and drink available daily. Whether you're looking for some delicious brain food or just in the mood for a scrumptious snack, our on-site bistro and cafe has got you covered with a wide selection of choices available.



Hair and Beauty Salon



Motor Vehicle Workshop

Commercial Outlets

AT NORTH NOTTS COLLEGE

HAIR AND BEAUTY SALON

North Notts College's salon offers a premium salon experience at an affordable price.

Kitted out with state-of-the-art equipment, with the calibre to match any high street salon, our hair, beauty and make-up salons are the perfect destination for some well-earned 'me time'.

01909 504501

nnc.ac.uk/insync



We're proud to say that healthy, happy hair is something of a passion of ours, so your locks are in very good hands.

We believe that the enthusiasm and creativity of our students combined with the experience of the highly qualified tutors is what makes us a cut above the rest.

An extensive list of beauty treatments are also available so there's no excuse not to spoil yourself with a new set of nails, indulge in a facial treatment or treat yourself to a professional makeover.

Commercial Outlets

AT DEARNE VALLEY COLLEGE

FITNESS 63 AND DVC SPORTS

With newly refurbished Astroturf pitches, an on site gym and sports hall, we are fully kitted out with the latest fitness machines and equipment.

Discounted memberships are available to students. Students also have access to the Manvers Lake offering a range of water sports and activities.

01709 513315

dvcsports@dearne-coll.ac.uk

dvcsports.co.uk



THE FARM SHOP

At Dearne Valley College, we have our very own on-site farm shop that is fully stocked with ethically sourced products produced by local businesses and the students themselves.

Shop local! Our on-site shop stocks a huge range of locally sourced produces including eggs from hens farmed on-site as well as veg boxes containing locally grown salad and other vegetables. We also sell a range of products made by the College students themselves including sweets and Dog Treat bags.

collegeco-operative@rnngroup.ac.uk



Commercial Outlets

AT ROTHERHAM COLLEGE

REFINE YOUR SKILLS IN REALISTIC WORKING ENVIRONMENTS

In our on-site commercial outlets, students can put their passion into practice by working with real customers in real working environments.

You can also visit any one of our outlets as a customer - whether you're getting your nails done, grabbing some gourmet grub or exercising in one of our state of the art fitness areas, there is something for everyone - at a fantastic, discounted price.

HAIR AND BEAUTY SALON

Rotherham College offers a premium salon experience at an affordable price.

Kitted out with state-of-the-art equipment, our hair, beauty and make-up salons are the perfect destination to treat yourself at a fraction of the cost.

01709 722776

inspire@rotherham.ac.uk

inspire.rotherham.ac.uk



THE WHARNCLIFFE

Pop into our fantastic on-site restaurant to refresh yourself with a morning coffee, unwind with friends for a relaxing drink or even enjoy a delicious three course meal.

Operating as Rotherham College's training restaurant, The Wharncliffe has an excellent reputation for outstanding food and service, provided by our learners under the watchful eye of their tutors.

01709 722767

thewharncliffe.co.uk



STUDIO THEATRE

Enjoy a play, panto, or music concert at our College Studio Theatre, performed by our students or external companies.

Whether you're looking for some light-hearted fun or the next cutting-edge drama, the Studio Theatre accommodates for all interests with a calendar brimming with events. Encompassing a diverse range of performing arts genres, the Theatre is equipped with the industry-standard facilities needed to create an immersive experience for its audience.

01709 722721

theatre@rotherham.ac.uk



Rotherham College

YOUR CAMPUS

Based in the heart of Rotherham's town centre, we specialise in providing career-focused training and education. We have industry-standard facilities and courses which are designed alongside local employers so that you can learn the most sought after skills required within your chosen industry and start your career a step ahead.

We serve a variety of local communities and provide an easy-to-use student bus service. Studying in the centre of town also gives the opportunity to have fun with your new peers, through exploring local cafes, shops and social spaces.

STUDY WITH US

Our courses include a variety of levels to suit all abilities - from entry level to degree-level - as well as a range of apprenticeships.

You can choose from a wide range of subjects including:

- Art, Graphic Design and Fashion
- Business, Retail and Tourism
- Catering and Hospitality
- Computing and Digital
- Construction (Bricklaying, Carpentry and Joinery, Plumbing and Electrical)
- Education and Childcare Services
- Engineering
- English and Maths
- English for Speakers of Other Languages (ESOL)
- FLEX - Dedicated department for students with Special Educational Needs
- Games Animation
- Hair and Beauty
- Health and Social Care
- Media Make-up
- Media and Photography
- Music
- Performing Arts

APPRENTICESHIPS

Many of these courses are offered as apprenticeships, which you can find at rotherham.ac.uk/course-type/apprenticeships. Apprenticeships are a great way to earn while you learn, as well as being a fantastic opportunity if you are more of a hands-on learner. Whether you stay within the company after your apprenticeship, or move on to somewhere new, it is an easy way to get your foot in the door in a well-paid career.

YOUR FACILITIES

Our courses are delivered within industry-standard facilities, which allows students to develop practical experience preparing them to thrive in their chosen career.

Learning within these environments will ensure you are workplace ready and allow you to:

- Build confidence and perfect your performance within our in-house theatre
- Prepare for a culinary career in our commercial training restaurant, The Wharnccliffe
- Hone your hairdressing, beauty therapy and nails skills in our commercial on-site training salon
- Build foundations for a successful career in bricklaying, joinery, plumbing or electrical installation

As well as excellent courses and learning facilities, we offer plenty of spaces for you to relax and socialise with friends. There are two on-site cafes serving a wide range of food and drinks (including Starbucks), and a theatre where you can watch our music and performing arts students put on shows and perfect their craft. The town centre also has a local market and plenty of independent shops and cafes to explore.

HELPING YOU SUCCEED

All courses are delivered by specialist tutors, many of which have worked or still work in the industry they teach. They bring invaluable expert knowledge and a breadth of experience to their teaching, and a passion for the development and achievements of their students.

We work extensively with employers within key industries to ensure our courses meet local and regional skill needs. This not only means students are equipped with the skills employers are looking for when they finish college, but also offers them the opportunity for work experience and potential future employment.

As well as plenty of support to launch your dream career, we provide a direct pathway to Higher Education at University Centre Rotherham (UCR), also part of the RNN Group, for those interested in studying a degree close to home with familiar tutors. UCR is a dedicated university centre offering degree-level courses and professional training to the local community of Rotherham.

For more information about Rotherham College, please visit rotherham.ac.uk

Dearne Valley College

YOUR CAMPUS

At Dearne Valley College, our purpose is to help you achieve your professional and personal goals.

All of the courses and apprenticeships we offer aim to provide students with the tools that they need in order to take their first step towards their dream career.

Located in Wath-upon-Dearne, less than 20 minutes from Rotherham Town Centre by bus, we specialise in providing our students with a career focused education. Our industry-specific courses are also designed with current and future career trends and technologies in mind, so that students can learn the most sought-after skills in their chosen industry and start their career one step ahead.

Students who study with us also have access to a range of industry-standard facilities. This includes our own onsite sports hall and gym facility, fully equipped with all the latest fitness technology. Students and staff are able to use these facilities, and have access to discounted memberships.

For more information about Dearne Valley College, please visit dearne-coll.ac.uk

STUDY WITH US

Our courses include a variety of levels to suit all abilities - from entry level to degree level - as well as a range of apprenticeships.

Choose from a wide range of subjects including:

- Animal Care
- Construction (Joinery, Plastering and Bricklaying)
- English and Maths
- Esports
- FLEX - Dedicated department for students with Special Educational Needs
- Health and Social Care
- Land-based Industries
- Motor Vehicle
- Public Services
- Sport

YOUR FACILITIES

We pride ourselves on investing in your future. All of our courses are delivered in industry-standard facilities with excellent equipment.

Our on-site Animal Care department houses many different species ranging from skinks to snakes, and meerkats to mice. We pride ourselves on our fantastic array of animals, being one of the only colleges in the UK to have our very own Armadillo.

At our Academy of Sport, you can really raise the bar by using facilities such as our on-site sports and fitness centre, multisport cages, AstroTurf pitches and the nearby Manvers boathouse and lake. You can also fuel your future in our state-of-the-art motor vehicle workshop housing hybrid and electric vehicles. You can also craft key skills in our workshops dedicated to trowel occupations, carpentry and joinery and plastering.

Outdoors, you can cultivate your land-based skills in our fantastic facilities including our 12-acre forest, polytunnels and more.

Your time with us is about more than learning. We want you to enjoy your experience with us - whether this be through socialising with your new peers or being able to relax whilst you study, we have plenty of social spaces for you to do so.

HELPING YOU SUCCEED

Studying with us gives you industry specific skills for life that you can use within your future career. It gives you industry specific skills that you can use in your future career.

By working with our extensive network of local and regional employers, we make sure that our courses give you the skills for success that businesses are looking for. Our professional networks also offer the opportunity for work experience and potential future employment.

Our talented teams of specialist tutors have worked, or still work, in the industry they teach. They bring a wealth of expert knowledge, breadth of experience and passion to their teaching. Whatever your area of interest, we have the facilities, expert tutors and professional links to help you succeed.



INVEST IN YOUR FUTURE

I'm Kelly
and this is
#MyTime
to study

**"I returned to education,
because I felt it was my
time to work on myself."**

Kelly Aged 40

Studied BA Hons in Theatrical Hair
at University Centre Rotherham

THIS IS
#MyTime



UCR University
Centre
Rotherham

PART OF RNN GROUP

Contact Us

01709 722806

ucr@rotherham.ac.uk

www.ucr.rotherham.ac.uk

STUDY *Smart, Local* STUDY

WHO ARE WE?

At University Centre Rotherham, we offer full and part-time higher-level and degree courses in the heart of Rotherham and at our partner college sites across South Yorkshire and North Nottinghamshire.

The Bridge Skills Hub, in the centre of Worksop, also offers several of our Higher Education courses. To find out more, refer to our website.

We're part of the RNN Group alongside Rotherham College, North Notts College, Dearne Valley College and a number of other subsidiary training organisations.

WHAT DO WE BELIEVE IN?

Your professional and personal fulfilment is at the heart of everything we do. Whether you're continuing your studies, changing career path, or returning to education, we're here to help you succeed.

WHAT CAN YOU EXPECT?

Studying with us is a rewarding and fun learning experience which is all about you. By studying a higher-level qualification on your doorstep you will have access to:

- State-of-the-art facilities
- Industry-experienced staff
- Lower fees
- Fantastic student experience
- Small, friendly community
- Degrees accredited by top universities
- A supportive and caring learning environment
- Flexible learning



OPEN EVENTS

Our Open Events are access all areas to give a real feel for what University Centre Rotherham offers for your next steps into Higher Education. Visitors can tour our campus and fantastic facilities, meet our support staff, Student Ambassadors and speak to our industry-experienced tutors from every department area.

VISIT US:

Wednesday 2nd October 2024
4.30pm - 7.30pm

Wednesday 12th February 2025
4.30pm - 7.30pm

Wednesday 25th June 2025
4.30pm - 7.30pm

To book a place at an event please visit: ucr.rotherham.ac.uk/open-events
You can also visit our on-demand Open Event website at:
ucreevents.rotherham.ac.uk

Bridge Skills Hub

HIGHER EDUCATION (HE) COURSES IN THE HEART OF WORKSOP.

North Notts College delivers a variety of Higher Education (HE) courses at The Bridge Skills Hub

OUR COURSES

Whether you are looking to switch careers, retrain, or further your education, our committed tutors will be there to help you every step of the way. With courses from level 3 up to level 5, The Bridge is the perfect place to begin your university education.

Our degree courses are accredited by top universities, meaning you can access the same high-quality education, without having to pay travel or accommodation expenses! We boast strong industry links in the local area and this is reflected in the diversity of courses we have on offer across the health and social care sector.

OUR FACILITIES

The state-of-the-art Education Centre houses six classrooms, several breakout spaces, private offices, an auditorium, two clinical teaching rooms, and its very own clinical suite and mock ward.

These facilities offer students exposure to real-world environments while providing a safe space for learning.



CASE STUDY

Louise Barker

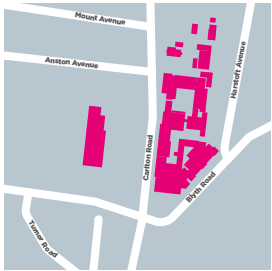
Access to HE - Health Science Professions

“The atmosphere is really friendly and the support from my tutors is fantastic. After my course, I plan on studying Adult Nursing at degree level.”

.....

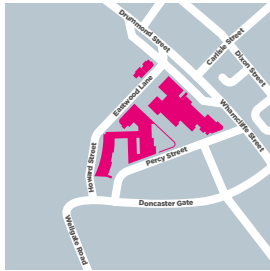
HOW TO Find us

NORTH NOTTS COLLEGE



Worksop Campus
Carlton Road
Worksop
S81 7HP

ROTHERHAM COLLEGE

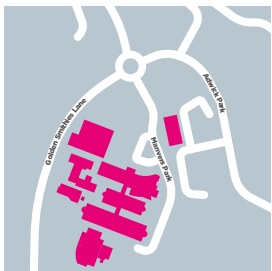


Town Centre Campus
Eastwood Lane
Rotherham
S65 1EG

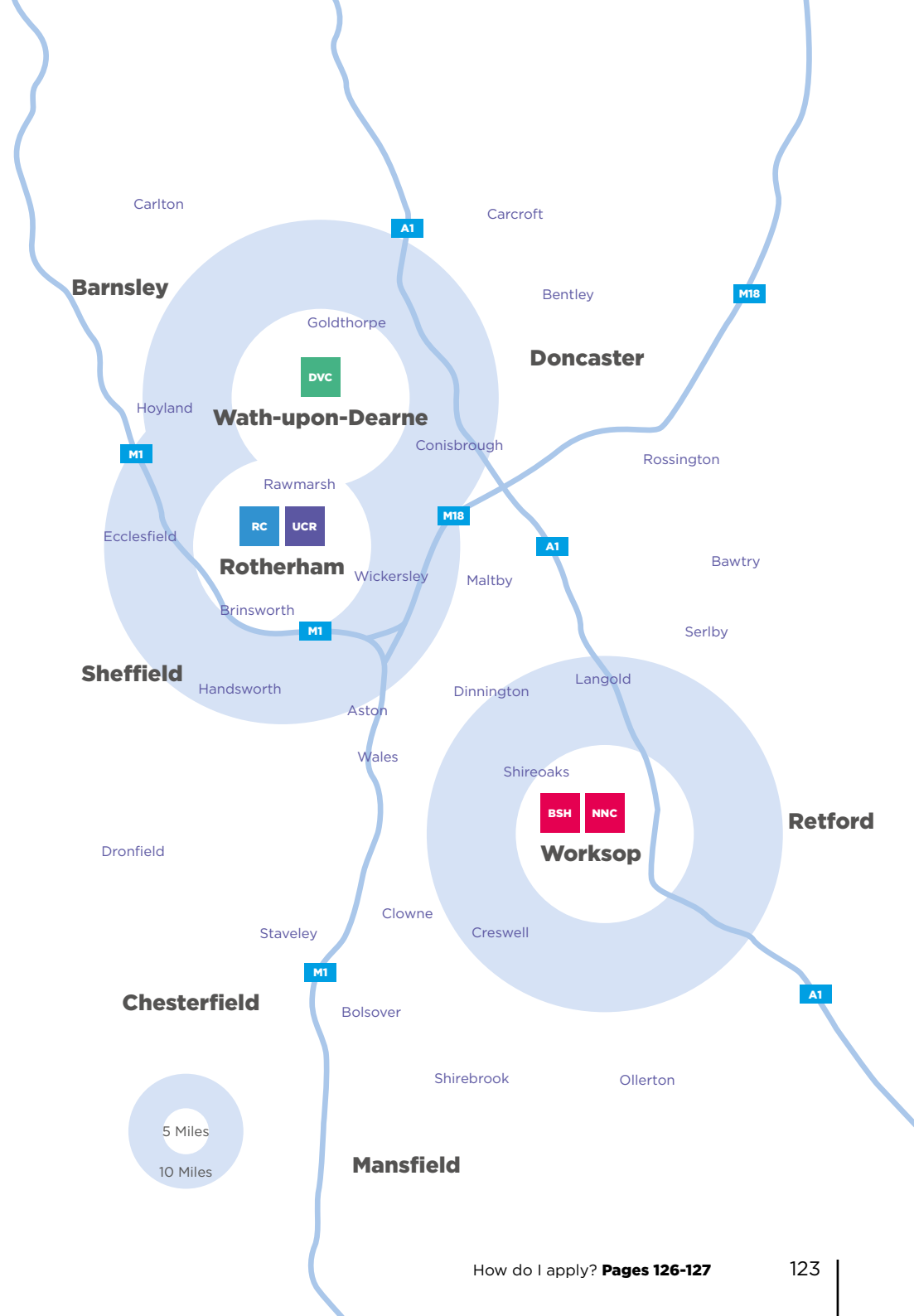
SITE KEY

- **DVC** Dearne Valley College
Dearne Campus
- **RC** Rotherham College
Rotherham Campus
- **UCR** University Centre
Rotherham
- **BSH** Bridge Skills Hub
- **NNC** North Notts College
Worksop Campus

DEARNE VALLEY COLLEGE



Manvers Campus
Manvers Park
Wath-upon-Deerne
Rotherham
S63 7EW



Open Events

EXPLORE OUR CAMPUSES AND FIND OUT MORE ABOUT THE BENEFITS OF STUDYING WITH US AT ONE OF OUR OPEN EVENTS.



NORTH NOTTS COLLEGE

Saturday 23rd November 2024
10.00am-12.00pm

Saturday 1st February 2025
10.00am-12.00pm

Saturday 22nd March 2025
10.00am-12.00pm





Wednesday 11th June 2025
3.30pm-6.30pm

WE INVITE YOU TO:

- Learn more about our wide range of courses
- Meet our industry-experienced tutors
- Speak to our Student Ambassadors about their experience at college
- Explore your career options
- Attend tours of our industry-standard facilities
- Get a feel for the courses available with our interactive demos
- Ask any questions and make an application

GET IN TOUCH

www.nnc.ac.uk

-  @NNCoFE
-  @northnottscoll
-  @NNC_WorksoP
-  @northnottscoll

CAN'T ATTEND AN EVENT?

We are always happy to talk with you about your future. We can provide tours of our facilities and individual talks to assist with your decision making.

Arrange a visit by contacting:

schoolevents@rnngroup.ac.uk

You can also find lots of useful information on our on-demand Open Event website, including our tutors speaking about their subject specialisms at: events.nnc.ac.uk

INTERESTED IN ATTENDING?

To pre-register please visit:

nnc.ac.uk/open-events

Or scan the QR Code:



How to Apply

Use our checklist to complete your application and start your College journey.

1. RESEARCH

- Identify subjects you find interesting in our course guide
- Visit our websites for useful information and to explore your career options
- Come along to an Open Event to meet our Tutors and get a feel for our college campus (See pages 124-125)

If you would like a more personalised visit, please email us at:
schoolevents@rnngroup.ac.uk

2. APPLY

- The quickest way to apply is online via our website:
nnc.ac.uk/apply-now

Once we receive your application you will get a confirmation email. Within five days you will receive login details to the online Admissions Manager where you can track the progress of your application.

Please include your personal email address and mobile number and update us of any changes so that we can keep in touch with you.

3. ATTEND

- You will be invited to attend an interview to ensure that the course is right for you
- If you have stated you have any learning needs we will also invite you in for an Additional Learning Support assessment

Note: Some courses may require you to bring a portfolio of work as part of the interview process.

4. ENROL

- When you have received your exam results in August you will be sent an email to enrol online
- You will also be invited in to complete your enrolment process by bringing in your GCSE certificates. You will receive your college badge, start date and timetable ready for September

CONTACT US

We are here to support you:

Our Learner Recruitment Team can provide more course information, assistance when completing your application and support you with unexpected exam results. To change any details on your application (including your course) you don't need to complete another form, simply contact us or visit our campus.

North Notts College

01909 504500
contact@nnc.ac.uk

.....
Carlton Road
Worksop
Nottinghamshire
S81 7HP



OPEN EVENTS

Saturday 23rd November 2024

10.00am-12.00pm

Saturday 1st February 2025

10.00am-12.00pm

Saturday 22nd March 2025

10.00am-12.00pm

Wednesday 11th June 2025

3.30pm-6.30pm

Pre-register at:

nnc.ac.uk/about/events



Scan here to
register for one of
our open events.



Rotherham College
North Notts College
Dearne Valley College

Part of
RNN GROUP



These courses may
be funded through



Education & Skills
Funding Agency